



Flaxman Road, SE5

1 bedroom flat to let

£360 Per Week

Furnished

Property Details

A bright and spacious one double bedroom flat, set within a handsome end-of-terrace Victorian townhouse. The property is ideally located minutes from Loughborough Junction Station, Ruskin Park, the amenities of Coldharbour Lane and Kings College Hospital.

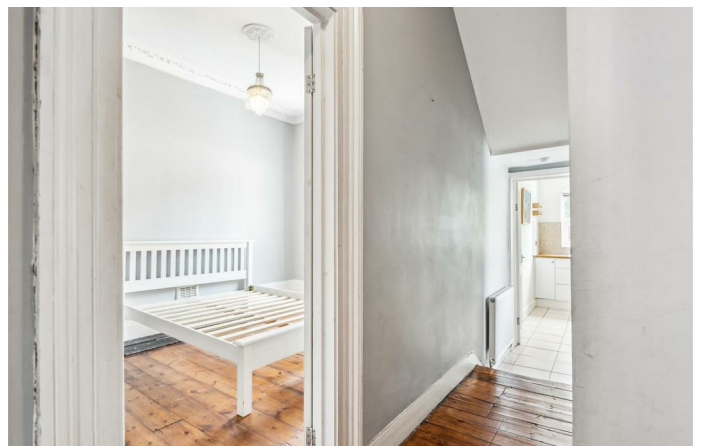
The reception room is particularly impressive, spanning the width of the property with a beautiful airy atmosphere and fantastic dimensions to relax and unwind or dine and entertain. The adjacent bedroom is equally comfortable, high ceilings and a bright airy feel are consistent through the property, making it a particularly pleasant home. A separate kitchen resides to the rear offering great storage options and surface space and a contemporary family-sized bathroom completes the flat.

The property is situated in a fantastic central location, a two minute walk from Loughborough Junction station, which provides direct trains to Blackfriars, Farringdon and Kings Cross/St Pancras. Brixton is within a twelve minute walk, perfect for anyone who wants to be close to the action - the delights of Brixton Village, POP Brixton and all the area has to offer in terms of food and nightlife are all within easy reach. Brockwell Park is a short distance and the amenities within leafy Herne Hill are a fifteen minute walk away. The arty vibe of Camberwell is also within easy walking distance, emphasizing how much choice is on offer here.

Council tax band B EPC rating E (50)

Features

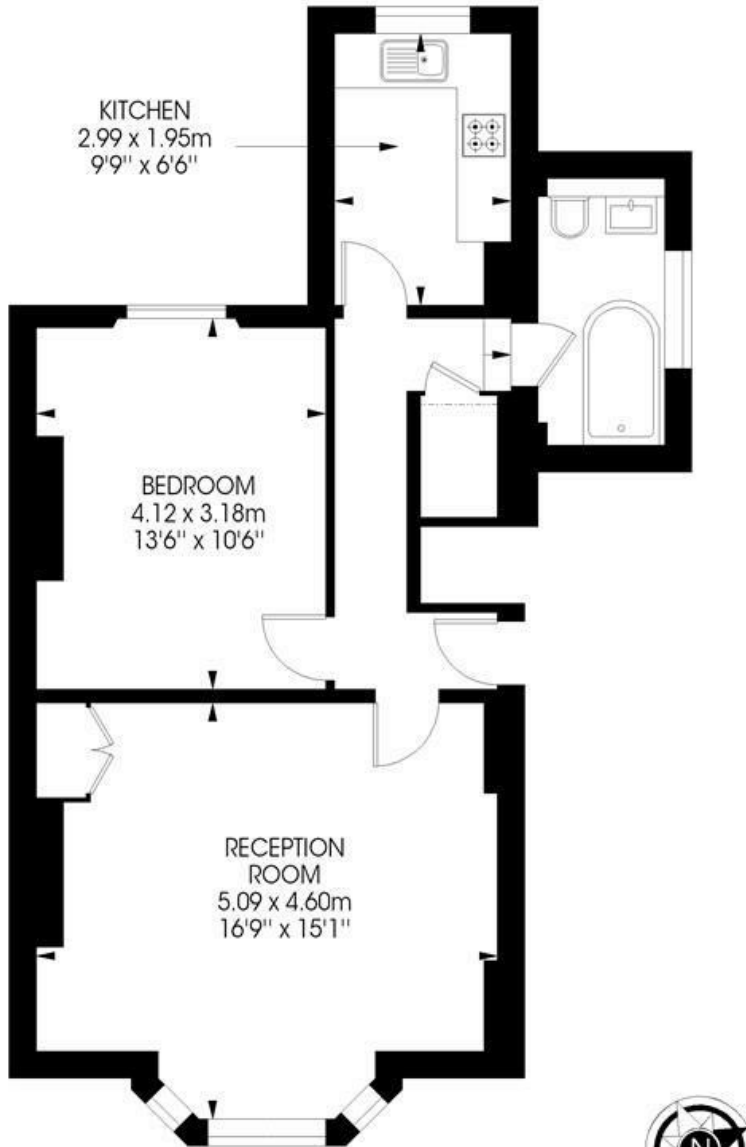
- One bedroom
- Separate reception
- Victorian
- Bright and airy throughout
- Close to Transport Links



Flaxman Road, SE5

Flaxman Road,
Denmark Hill, SE5
1 bedroom flat

Approximate internal area: 571 sqft / 53 sqm



Ground Floor



While we try our very best, floor plans are produced as a guide only and we take no responsibility for the precise accuracy with which any property is represented.

Flaxman Road, SE5

