

**Medwin Street, Clapham, SW4**

2 bedroom flat to let

**£400 Per Week**

Furnished

## Property Details

An immaculate two bedroom flat complete with peaceful patio garden - situated around a ten minute walk from Brixton Station. This beautiful property comprises a bright spacious reception room large enough to have a dedicated dining area. A separate kitchen fitted with ample storage and modern appliances. Two great size double bedrooms one having the added benefit of access to the large patio garden perfect for the upcoming summer months. Both bedrooms share a modern clean family size bathroom. The property is a short walk, around seven-minutes, from several stations including Clapham North, Clapham Common and Brixton. given you access to the Northern and Victoria line.

Council tax band C      EPC rating D (68)

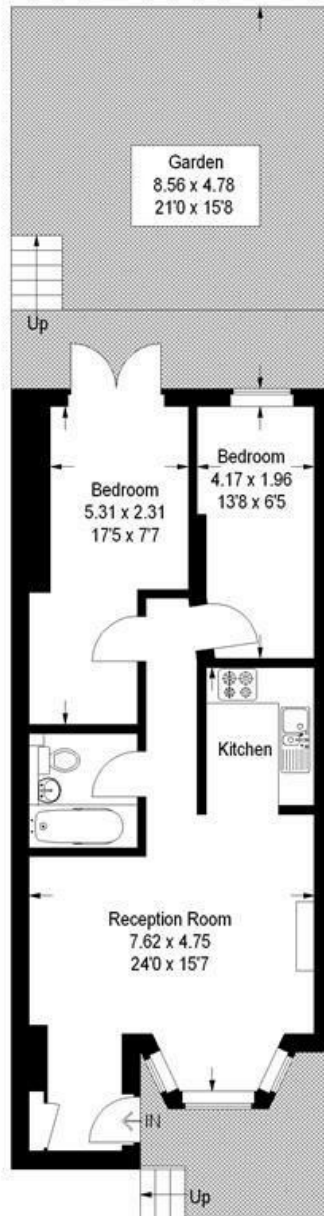
## Features

- Private garden
- Bright and airy throughout
- Close to transport links
- 2 Double Bedrooms
- Close to Clapham Common
- Furnished



## Medwin Street, SW4

Approximate Gross Internal Area  
54.8 sq m / 590 sq ft



This plan is for layout guidance only. Not drawn to scale unless stated. Windows and door openings are approximate. Whilst every care is taken in the preparation of this plan, please check all dimensions, shapes and compass bearings before making any decisions reliant upon them. (ID173385)

Medwin Street, Clapham, SW4

