

Effra Road, Brixton, SW2

2 bedroom flat - purpose built for sale

£400,000

Leasehold

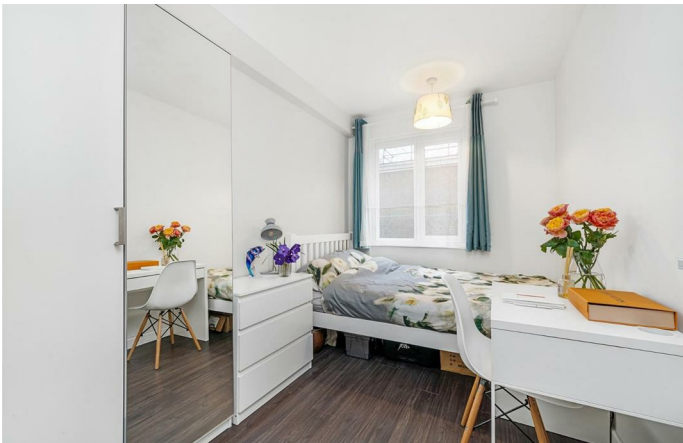
Property Details

A beautifully presented two double bedroom apartment, set over the first floor of a popular art deco residential block, tucked back from the street on the centrally-located Effra Road, moments from Brockwell Park, equidistant to Brixton tube and Herne Hill station. The apartment has a great finish and large windows, the spacious reception room is no exception and boasts a huge triple-glazed window, providing a quiet and peaceful ambience. The modern kitchen is tasteful with plenty of storage and integrated appliances. The principle bedroom displays the same vast yet triple-glazed windows and offers an abundance of built-in storage, plus the proportions to accommodate a desk with a leafy outlook. The second bedroom is also set up with a desk in addition to the traditional bedroom furniture. The apartment is completed by a bright and spacious bathroom, including a bath and shower, storage and finished with a heated towel rail. Of further benefit, there is a lift, a readily available care-taker, secure entry system and a close-knit neighbourhood community feel.

Features

- Two double bedrooms
- Popular art deco residential block
- Quietly set back from the street
- Large triple-glazed windows
- Bright and airy
- Well-presented throughout
- Lift access
- Brockwell Park a two-minute stroll
- Brixton tube and Herne Hill station both a ten-minute walk
- Local amenities on the doorstep

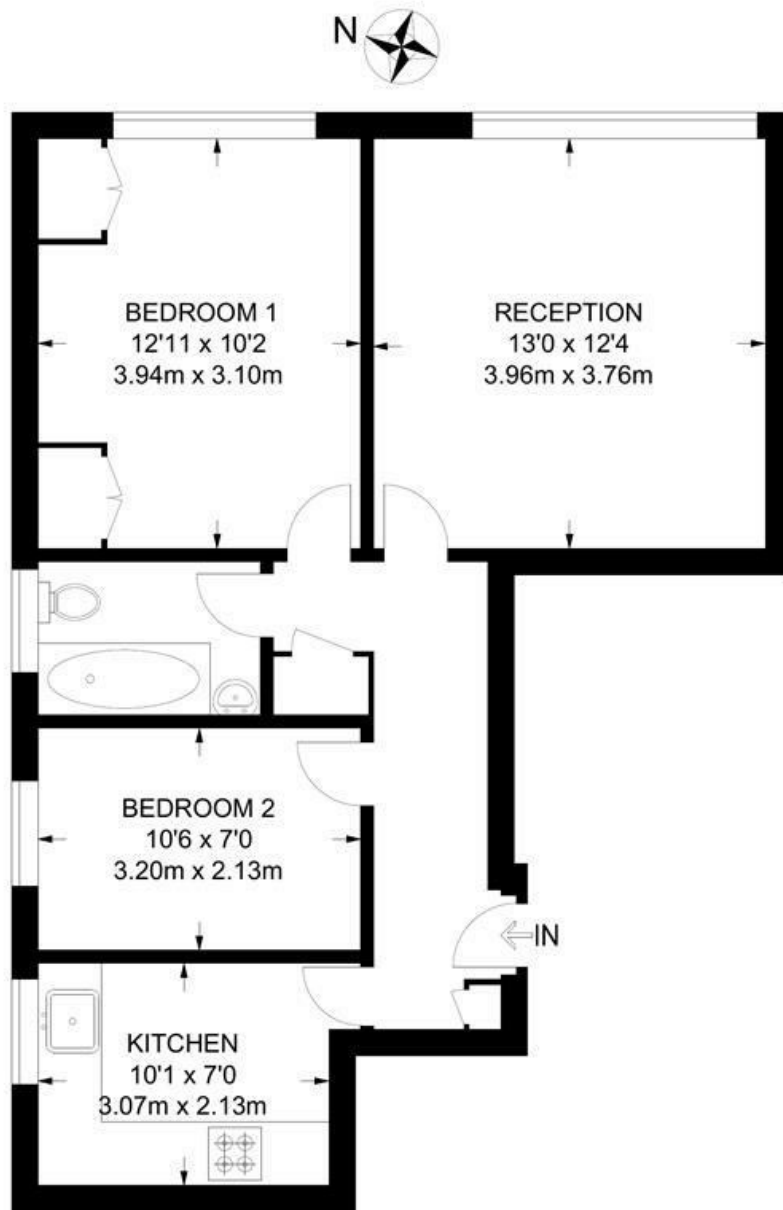
Council tax band B EPC rating D (61)



Effra Road, Brixton, SW2

Effra Road, SW2
2 Bedroom Flat

APPROXIMATE GROSS INTERNAL AREA: **558 SQ FT / 51.8 SQ M**



FIRST FLOOR



While we try our very best, floor plans are produced as a guide only and we take no responsibility for the precise accuracy with which any property is represented.

Effra Road, Brixton, SW2

