



Hubert Grove, Brixton, SW9

2 bedroom flat to let

£470 Per Week

Furnished

Property Details

This lovely flat is nestled in a residential road between Clapham High Street and Brixton. The property comprises an open plan kitchen and reception area divided by a small island. Towards the back of the property you will find two double bedrooms, sharing a modern bathroom, with the master bedroom leading out onto a roof terrace. The closest train station is a mere six minute walk away, with Brixton Station being an additional two minutes away. Clapham High Street and Brixton both offer great opportunities for socializing, with loads of entertainment, shops, restaurants, and pubs.

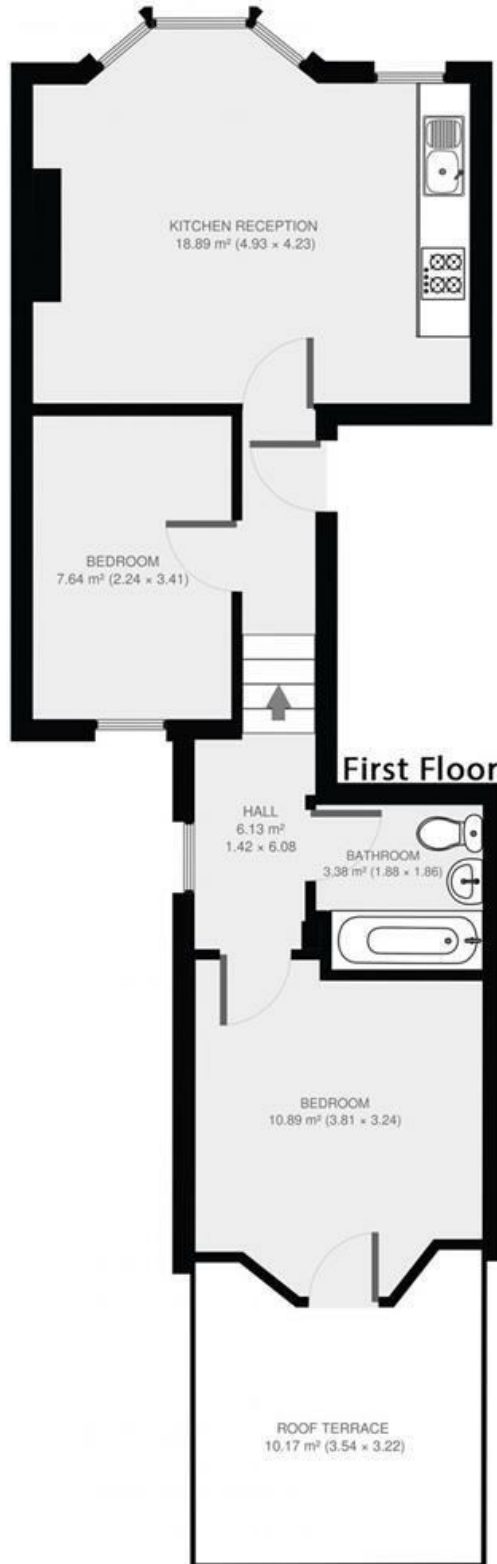
Features

- Terrace
- End of terrace
- Victorian conversion
- Close to transport links
- Close to town centre
- Furnished

Council tax band C EPC rating D (65)



Hubert Grove



2 Bed Flat.

Approx internal area:

539 sqft 50 sqm

While we do try our very best, floor plans are produced as a guide only and we take no responsibility for the precise accuracy with which any property is represented

Hubert Grove, Brixton, SW9

