

**Wingford Road, Brixton, SW2**

2 bedroom flat - purpose built to let

**£450 Per Week**

Furnished

## Property Details

This charming two bedroom period maisonette is nestled on Wingford Road within walking distance to the amenities on offer within Brixton, Herne Hill and Clapham. This spacious top floor maisonette has a private ground floor entrance with stairs that lead to the first-floor landing and nearly 650 square feet of internal living space. From the landing at the back of the property, you have fantastic eat-in kitchen diner with all you need in terms of mod cons and ample space for a large dining table. The separate reception room sits at the front of the building with double glazed windows and solid wooden floorboards. The master bedroom is a great size and the second bedroom is versatile, it could be used as a guest room or as a home office. The bathroom is a good size with a modern finish. Last but not least there are stairs down from to a private East facing garden, the perfect entertaining space to enjoy the warmer months. The flat is a short walk from both Clapham and Brixton and all that these two in-demand areas have to offer. Brockwell Park is within close proximity and a wide selection of local transport links which include Brixton tube and rail station (a fifteen-minute walk), three tube stations in Clapham (Northern Line), Herne Hill station (British Rail) and numerous bus links which take you down the hill to Brixton tube within a few minutes and then through and onto Central London. Just round the corner is the lovely Elm Park Tavern and it is only a short stroll to the celebrated amenities in Herne Hill. The diverse Clapham High Street, Clapham Old Town and the cafes and boutiques in Abbeville Village are all within reach. Situated between Brixton Hill and Streatham Hill, this property has access to the extensive bus network on Brixton Hill which is just a few

## Features

- One bedroom
- Study/Office room
- Private Garden
- Bright and airy throughout
- Characterful features
- Walking distance to the Victoria and Northern tube lines

Council tax band C    EPC rating C (69)



**K**

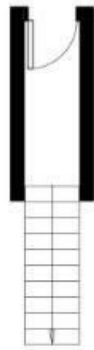
Wingford Road

2 Bed flat

Approx internal area:

**646 sqft 60 sqm**

While we do try our very best, floor plans are produced as a guide only and we take no responsibility for the precise accuracy with which any property is represented



Ground Floor



Wingford Road, Brixton, SW2

