



Acre Lane, Brixton, SW2

1 bedroom flat - purpose built for sale

£400,000

Leasehold

Property Details

A bright and airy one double bedroom apartment with private terrace, set securely on the second floor of this highly-sought-after development on Acre Lane, between Clapham and Brixton. This modern building benefits from fob entry, lift, bike store, communal garden and high energy standards, reducing bills and increasing sound insulation. The heart of the home is the open plan reception, the kitchen is sleek with integrated appliances and ample space for a dining table. The comfortable living area is flooded with light from floor to ceiling windows and door with access to a private terrace, enjoying a South-facing aspect and pleasant views of the neighbourhood. The bedroom is a spacious double, with the same sunny aspect and large windows, plus space for wardrobes and storage. This lovely home has a large bathroom with bath and shower. There is more storage in two large cupboards in the hall and reception. In addition to the private terrace, there is a garden boasting a playground, benches, a lawn area and shrubs, providing an additional outside space to be relished along with the other friendly inhabitants of the building.

Council tax band C

EPC rating B (85)

Features

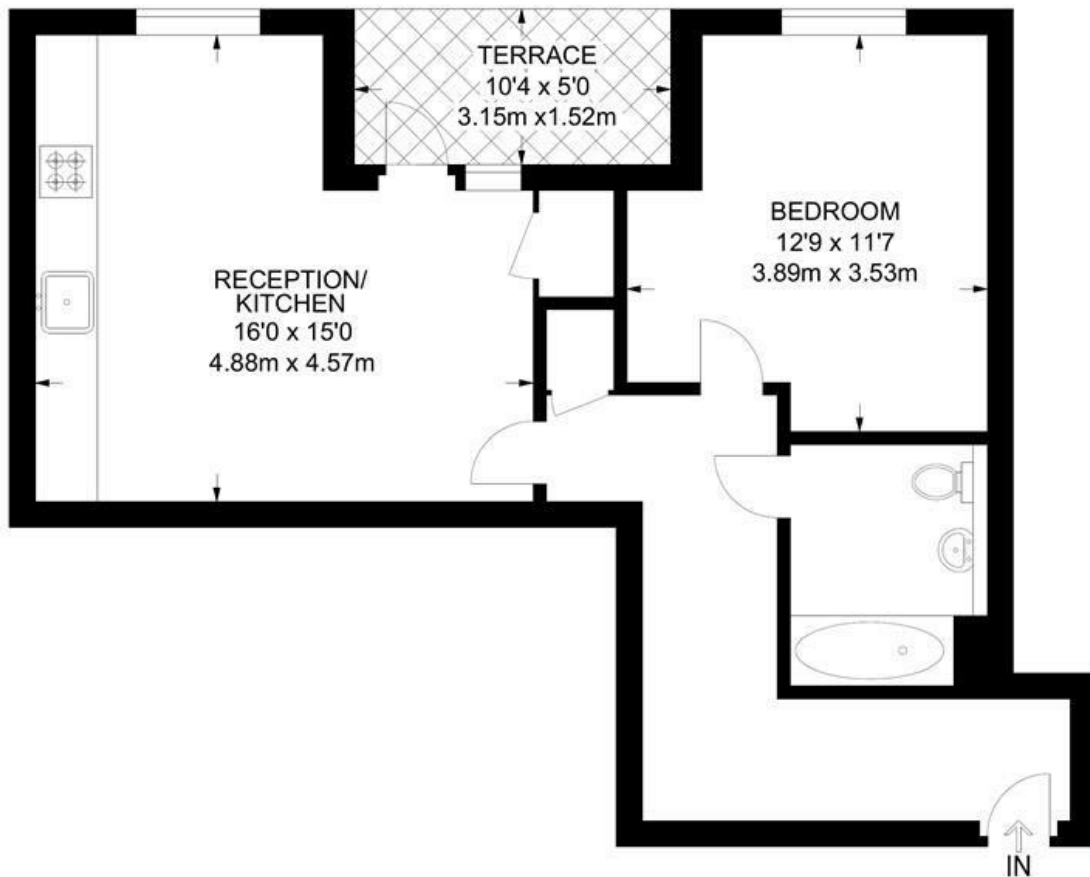
- One double bedroom
- Secure modern development
- South-facing private balcony
- Communal garden with playground
- Lift and secure bike storage
- Local amenities of Acre Lane on the doorstep
- Northern and Victoria lines in minutes
- Clapham North a nine-minute stroll
- Brixton and Clapham Common stations both a twelve minute walk



Acre Lane, Brixton, SW2

Acre Lane, SW2
1 Bedroom Flat

APPROXIMATE GROSS INTERNAL AREA: **522 SQ FT / 48.5 SQ M**



SECOND FLOOR



While we try our very best, floor plans are produced as a guide only and we take no responsibility for the precise accuracy with which any property is represented.

Acre Lane, Brixton, SW2

