

**Doverfield Road, London, SW2**

5 bedroom house - terraced for sale

**£899,950**

Freehold

## Property Details

A charming five bedroom Edwardian house that has been lovingly extended and cared for by its current owners. This property boasts 1600 square feet, making it a cut above the other period houses on the road in terms of space and features. Doverfield Road is a quiet and peaceful residential street, located just off vibrant and trendy Brixton Hill, a seventeen-minute walk to the centre of Brixton and all that the area has to offer. The property comprises five bedrooms, two bathrooms, a characterful double aspect reception, a modern kitchen and a secluded garden. Freehold.

## Features

- Private garden
- Edwardian
- Characterful features
- Bright and airy throughout

Council tax band E    EPC rating D (59)







Doverfield Road, London, SW2

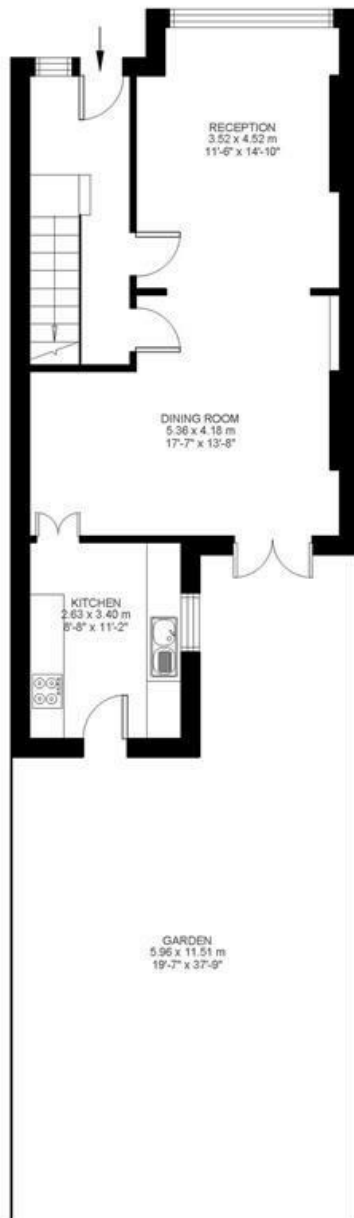


## Doverfield Road

5 Bed House  
 Approx internal area:

**1599 sqft 149 sqm**

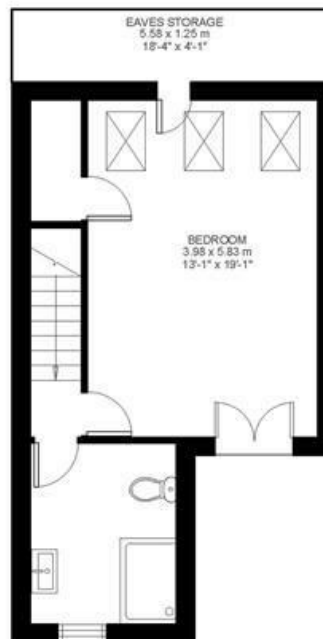
While we do try our very best, floor plans are produced as a guide only and we take no responsibility for the precise accuracy with which any property is represented



Ground Floor



First Floor



Second Floor



Doverfield Road, London, SW2

