



Pinfold Road, Streatham, SW16

3 bedroom flat - conversion for sale

£499,950

Leasehold

Property Details

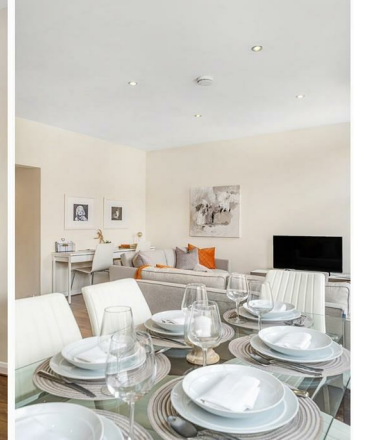
An immaculately presented three double bedroom, three bathroom garden flat within a semi-detached period house on Pinfold Road, a popular street moments from the amenities of Streatham's vibrant high street. Recently redecorated throughout with neutral décor and tasteful finishes. Bright and extremely spacious, the open-plan reception is ideal for entertaining at a large dining table, lounging and cooking, whilst still allowing room for an office area. The stylish kitchen offers storage within neutral cabinetry with wooden surfaces, plus space for an island if desired. A generous lounge area is bathed in light from three large windows to the front and an additional side window, adding to the ambience. Three generously sized and fairly equal double bedrooms, make the property perfect for those wishing to rent out a room or two, or simply enjoy a luxurious property using the additional two rooms as desired. Two of the bedrooms enjoy leafy views over your shared garden below, whilst the other has a contemporary en-suite. A further full bathroom plus a third W.C. serve the other bedrooms. Accessed via a side gate the large South-facing shared garden is a generous suntrap surrounded by pretty trees.

Council tax band C

EPC rating (null)

Features

- Three double bedrooms
- Three bathrooms
- Semi-detached period conversion
- Large South-facing shared garden
- Recently redecorated
- Amenities of Streatham's vibrant high street on the doorstep
- Streatham and Streatham Hill stations both a ten-minute walk
- Tooting Bec Common an eight-minute stroll
- Excellent transport links
- Chain-free



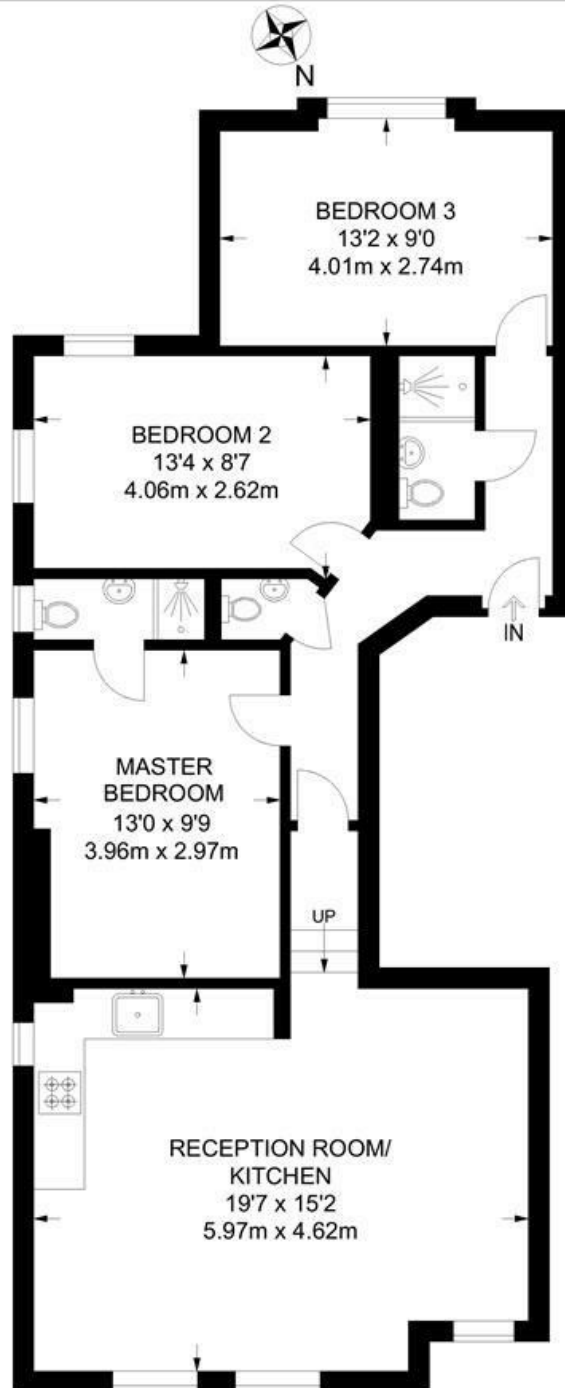


Pinfold Road, Streatham, SW16

Pinfold Road, SW16

3 Bedroom Flat

APPROXIMATE TOTAL INTERNAL AREA: 805 SQ FT / 74.8 SQ M



FIRST FLOOR



While we try our very best, floor plans are produced as a guide only and we take no responsibility for the precise accuracy with which any property is represented.

Pinfold Road, Streatham, SW16

