



Railton Road, Herne Hill, SE24

2 bedroom flat - conversion for sale

£550,000

Share of Freehold

Property Details

An appealing two double bedroom maisonette with a private garden on the desirable Railton Road within the LTN. Positioned with Brixton at one end of the street and Herne Hill at the other, close to Brockwell Park. Measuring almost 700 square feet with its own private entrance and wooden floors. Both bedrooms are doubles with built-in wardrobes, separated by the bathroom for a desirable level of privacy. The bathroom is spacious, with both bath and overhead shower. The reception offers generous proportions to lounge and dine, with dual aspect windows and door to the garden this is a sizeable and versatile room. French doors lead into the kitchen which has a further dining area. Sleek and contemporary the kitchen has ample storage, an ergonomic layout, lofty ceilings and garden views. Accessed from kitchen and reception, the private garden is low-maintenance, ready to be enjoyed the moment the weather permits. Laid to paving with a raised seating area, a blank canvas for the new owner to create their own outdoor oasis. A gem of a home with a tastefully neutral finish, versatile layout, own entrance, well-proportioned rooms, garden and great location. Early registration of interest is advised.

Features

- Two double bedrooms
- Private garden
- Victorian conversion
- Private entrance
- Neutrally well-presented throughout
- Brixton a four-minute walk
- Herne Hill a seven-minute stroll
- Brockwell Park in under five minutes by foot
- Victoria Line and two overground stations
- Chain-free & share of freehold

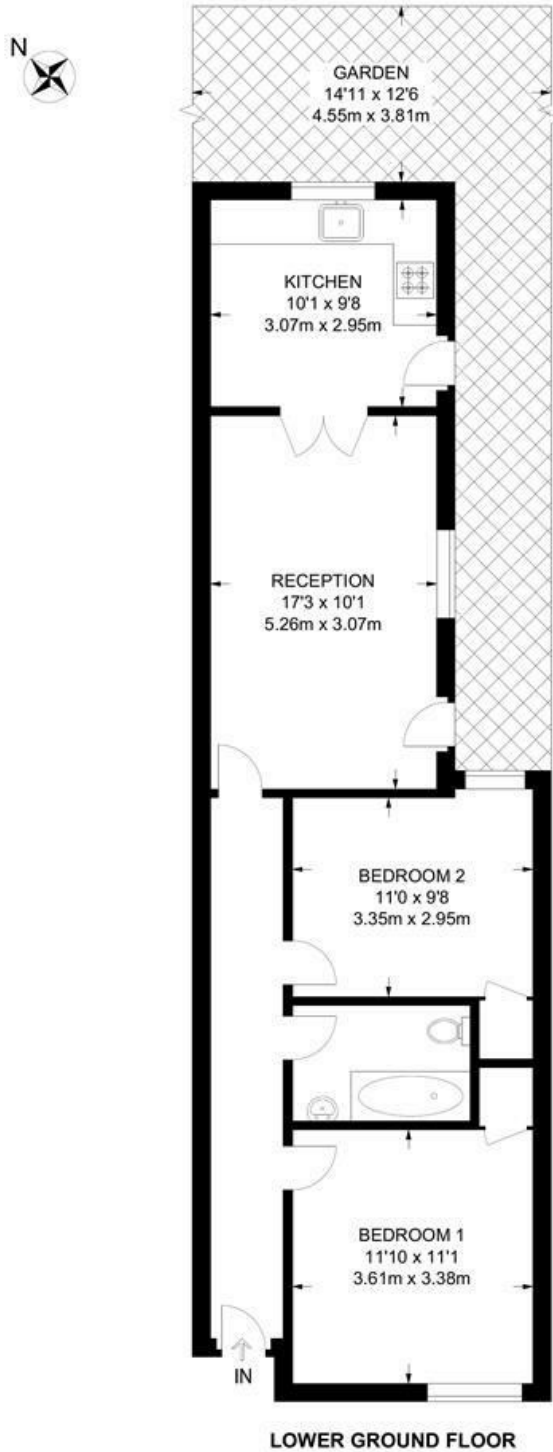
Council tax band C EPC rating C (71)



Railton Road, Herne Hill, SE24

Railton Road, SE24
2 Bedroom Flat

APPROXIMATE GROSS INTERNAL AREA: **691 SQ FT / 64.2 SQ M**



While we try our very best, floor plans are produced as a guide only and we take no responsibility for the precise accuracy with which any property is represented.

Railton Road, Herne Hill, SE24

