



Raeburn Street, Brixton, SW2

4 bedroom house - terraced to let

£900 Per Week

Furnished

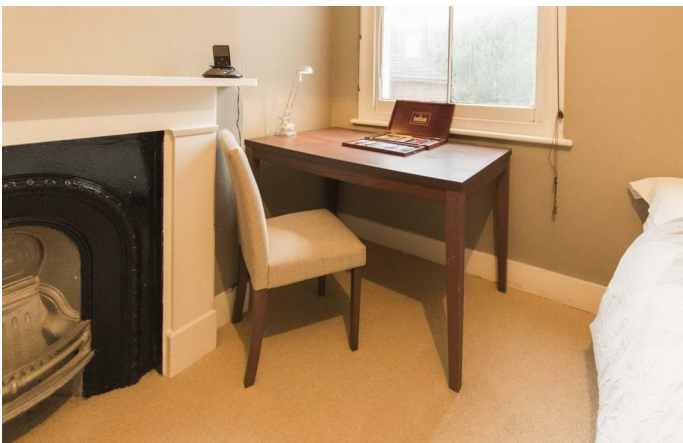
Property Details

A gorgeous and bright four bed terraced Victorian house - situated in the heart of the vibrant town of Brixton. This fantastic property is located on a quiet, highly sought after road in Brixton. The pretty, pastel-coloured house is set behind a hedge in a terrace of similarly pretty houses and comprises a large reception to the front displaying all original features. There is also a large eat-in kitchen which seamlessly flows out into the private garden, upstairs is a grand master bedroom, two further large doubles and a sleek family bathroom and the fourth bedroom is on the ground floor. Brixton tube station and all its high street amenities are a ten minute walk away, Clapham High Street a also a similar distance, offering excellent transport links with Northern Line underground stations, Clapham High Street station on the Overground and numerous bus routes to other areas of London. Venn Street and its multitude of restaurants and bars, the green open spaces of Clapham Common are all within walking distance.

Features

- Four double bedrooms
- Private garden
- Spacious reception room
- Good transport links
- Light and airy
- Close to transport
- Partially furnished

Council tax band E EPC rating E (51)



Raeburn Street

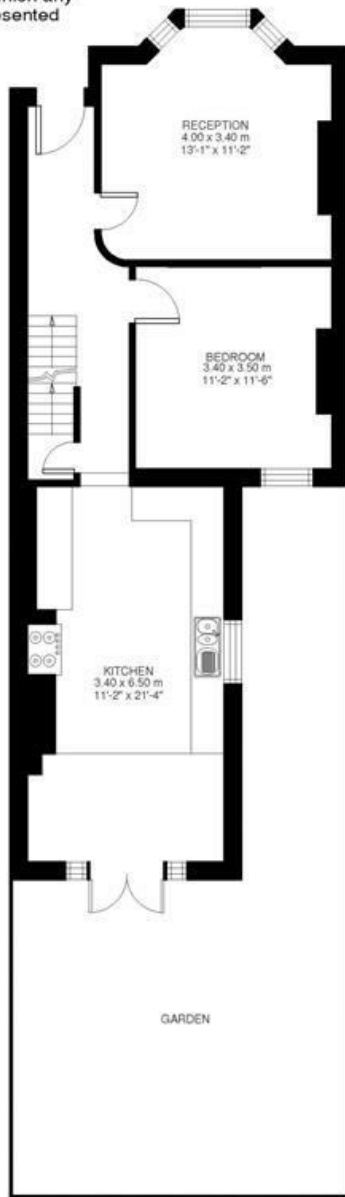


4 Bed House

Approx internal area:

1281 sqft 119 sqm

While we do try our very best, floor plans are produced as a guide only and we take no responsibility for the precise accuracy with which any property is represented



Ground Floor



First Floor



Raeburn Street, Brixton, SW2

