

**Tulse Hill, SW2**

2 bedroom flat to let

**£485 Per Week**

Furnished

## Property Details

An absolutely stunning two double bedroom apartment on the top floor in this fantastic gated development located a short walk from Brixton town centre and Herne Hill. This development has maintained grounds, private entrance to one of London's most popular spaces; Brockwell Park. The apartment is immaculately presented and includes two well-proportioned bedrooms and two modern bathrooms as well as the bright, open plan reception which has direct access to the roof terrace with phenomenal views!

## Features

- Two bedrooms
- Two bathrooms
- Open plan living and kitchen area
- Secure gated development
- Close to Brockwell Park
- Excellent transport links

Council tax band D    EPC rating C (79)



# Tulse Hill

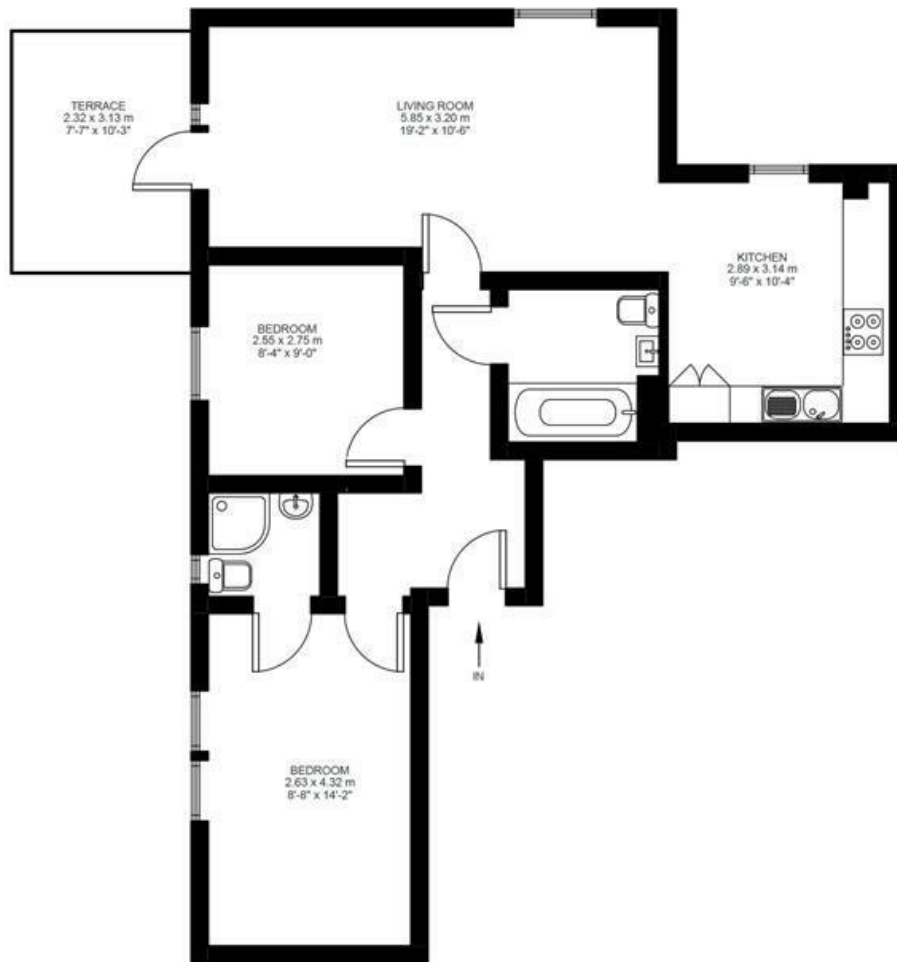
# K

2 Bed flat

Approx internal area:

**662 sqft 61 sqm**

While we do try our very best, floor plans are produced as a guide only and we take no responsibility for the precise accuracy with which any property is represented



Fourth Floor



Tulse Hill, SW2

