



## Lambert Road, Brixton, SW2

2 bedroom maisonette to let

£495 Per Week

Part furnished

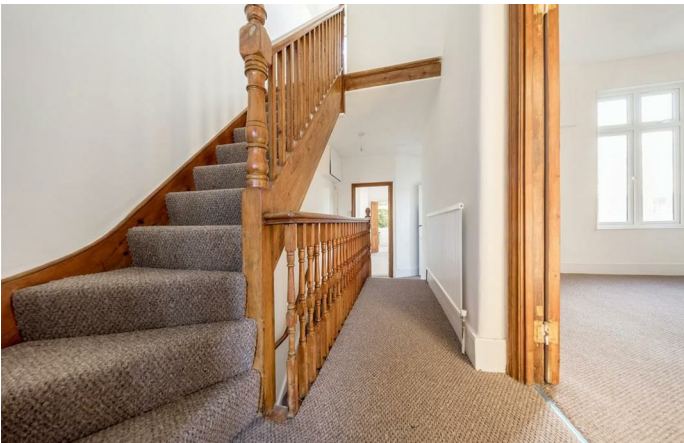
### Property Details

A wonderful one or two bedroom flat located on a sought after road a short walk away from the hustle and bustle of the Brixton nightlife. The flat is located within walking distance from Brixton, Clapham North and Clapham Common stations giving you multiple options for getting about town. The flat has just been recently part-refurbished to a high standard and comprises of a separate kitchen, bathroom and dining room / lounge to the rear with a double bedroom and large lounge or 2nd bedroom to the front. Another fantastic benefit that comes with this property is the roof terrace which you can enjoy throughout the summer months.

### Features

- Two bedrooms
- One bathroom
- Separate kitchen and reception
- Roof terrace
- Close to Brockwell park
- Close to transport links

Council tax band D    EPC rating C (73)





## 2 Bed Flat

Approx internal area:

**861 sqft 80 sqm**

While we do try our very best, floor plans are produced as a guide only and we take no responsibility for the precise accuracy with which any property is represented

## Lambert Road



Lambert Road, Brixton, SW2

