

Lombard Road, SW11

2 bedroom flat to let

£923 Per Week

Furnished

Property Details

Keating Estates are proud to present this remarkable luxury two bed, two-bathroom riverside apartment in one of Battersea's premier developments, Lombard Wharf. This apartment is immaculate and has a sense of pure luxury while being engineered to meet all the requirements of modern living.

Lombard Wharf is a sought after development and situated within close proximity to Battersea Square, River Thames, Chelsea and Clapham Junction, living here you will have access to resident's gym, concierge and bike storage facilities.

The open-plan reception room is exceptional, a vast space lit through floor to ceiling windows with an abundance of room to dine, entertain and relax. The kitchen is finished to an impeccable standard and boasts state of the art, fully integrated AEG appliances. Floor-to-ceiling glass doors open out to the wrap around private terrace offering breathtaking views of the River Thames, which is sure to provide some wow-factor.

The master bedroom is a fine example of luxury – is impressive in size and well-designed fitted wardrobes provide ample storage, a sleek en-suite bathroom and access to the private terrace. The second bedroom is spacious and the space is versatile due to size, which can be repurposed as

Features

- Two bedrooms
- Two bathroom
- Private terrace
- Spacious throughout
- Residents gym
- Concierge service
- Close to Battersea Park
- Close to Transport links

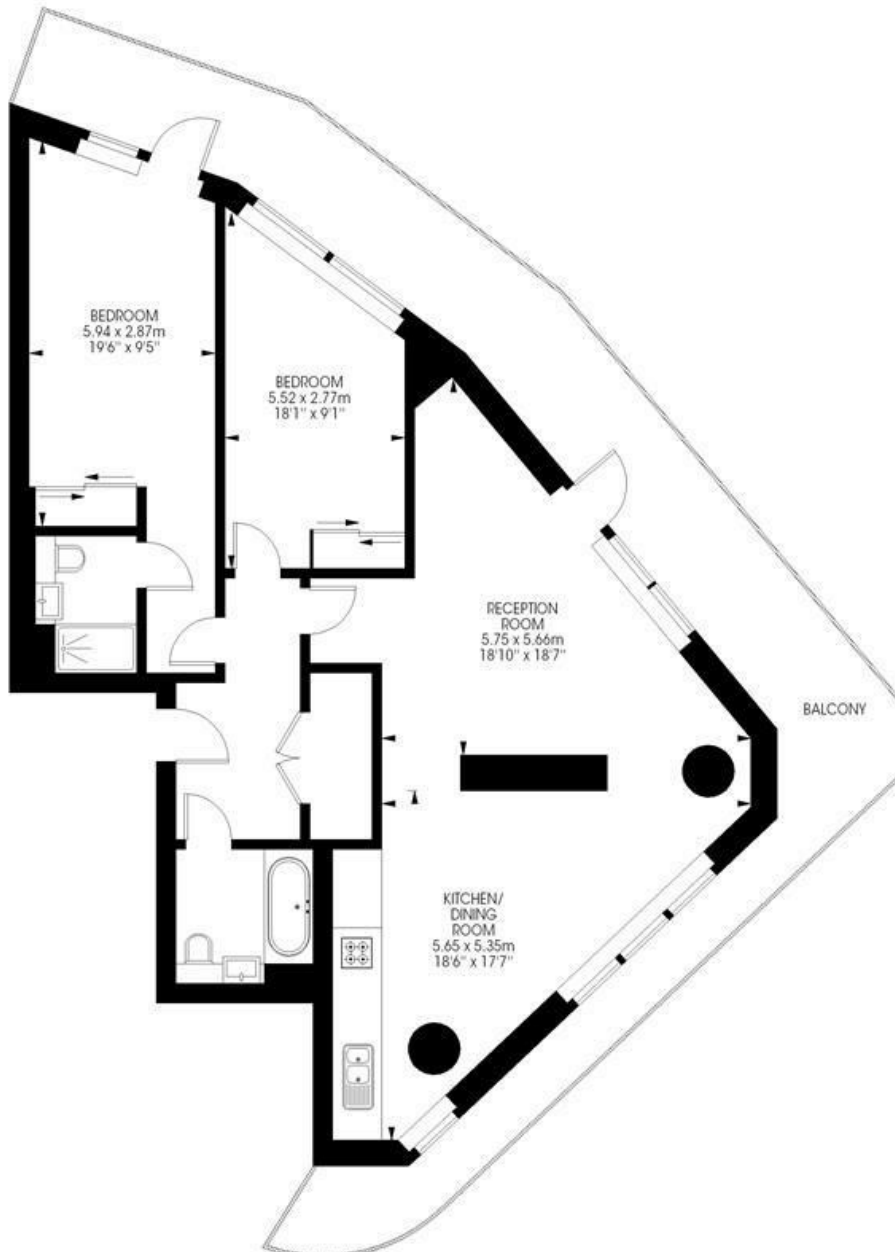
Council tax band F EPC rating B (83)



Lombard Road, SW11

Lombard Wharf,
Lombard Road,
Battersea, SW11
2 bedroom flat

Approximate internal area: 1023 sqft / 95 sqm



Twenty Third Floor

While we try our very best, floor plans are produced as a guide only and we take no responsibility for the precise accuracy with which any property is represented.



Lombard Road, SW11

