



Saltoun Road, Brixton, SW2

2 bedroom flat - conversion for sale

£750,000

Share of Freehold

Property Details

The ample lounge that also offers comfortable dimensions for a large dining table wraps around in an “L” shape and benefits from a generous kitchen complete with abundant storage options, surface space and a trendy breakfast bar for a more casual dining option. Stairs lead up to a stunning roof terrace, boasting all day sun and attractive views. Nestled peacefully at the rear of the second floor, one of the two double bedrooms is beautifully finished and has great built-in storage options. Adjacent, a family sized modern bathroom. The second bedroom is arranged over the third floor, a particularly spacious ‘loft-style’ room complete with significant storage, further eaves storage and a sleek ensuite bathroom. The property is elegantly decorated throughout with high quality fixtures and fittings, ready to move into.

Features

- Two double bedrooms
- Two bathrooms
- Private roof terrace
- Split-level Victorian conversion
- Over 1140 square feet of internal space
- Bright, airy and characterful throughout
- Sought-after location close to transport links
- Local amenities of central Brixton
- Share of freehold

Council tax band D EPC rating (null)



Saltoun Road, Brixton, SW2

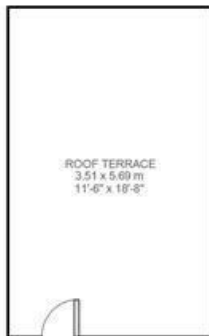
Saltoun Road, Brixton, SW2

2 Bedroom Flat

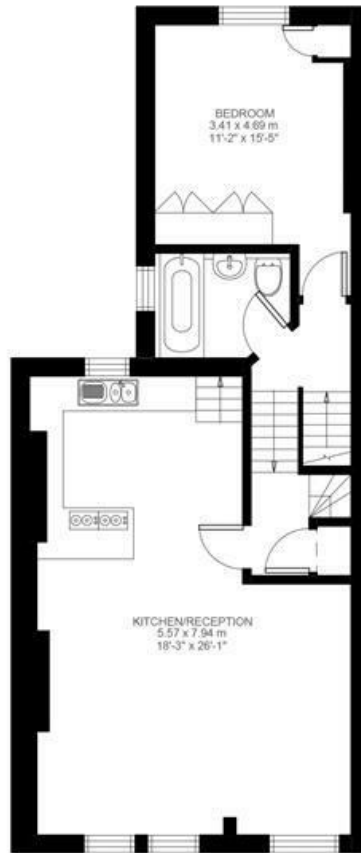
Approximate internal area: **1010 sqft 94 sqm**

Approximate eaves storage: **131 sqft 12 sqm**

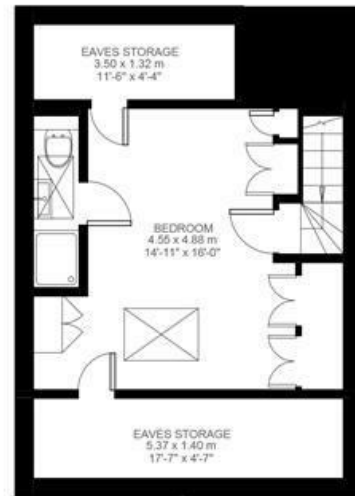
Approximate total internal area: **106 sqm 1142 sqft**



Entrance To Second Floor



Second Floor



Third Floor



While we do try our very best, floor plans are produced as a guide only and we take no responsibility for the precise accuracy with which any property is represented.

Saltoun Road, Brixton, SW2

