



**Branksome Road, Brixton, SW2**

2 bedroom flat to let

**£415 Per Week**

Furnished

## Property Details

An exquisite two bedroom property- nestled in between the lively streets of both Brixton and Clapham. This top floor flat between both the Clapham and Brixton. The flat comes complete with a separate galley style kitchen with lots of storage space and fitted modern appliances., two spacious double bedrooms, a sleek family size bathroom and a large bright and open reception room with space for a dedicated dining area. Being in between both Clapham and Brixton (around A fifteen minute walk from each) there are fantastic travel links straight into the city including both the Northern and Victoria lines. There is also a huge choice of fantastic entertainment in the local area and you are spoiled for choice when it comes to the diverse cuisine on offer in Brixton.

## Features

- Victorian Conversion
- Bright and Airy
- 2 Double Bedrooms
- Central Location
- Walking distance to Both the Northern and Victoria line
- Walking Distance to Clapham Common

Council tax band C      EPC rating E (48)





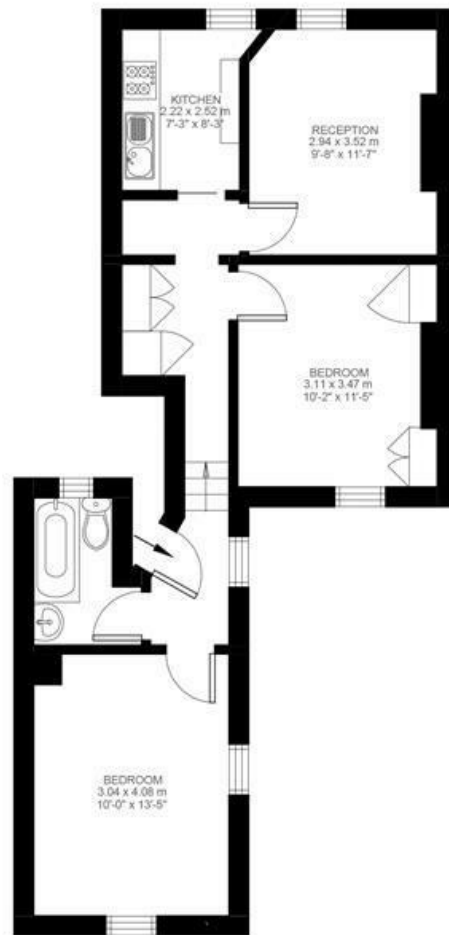
## Branksome Road

### 2 Bedroom Flat

Approx internal area:

**568 sqft 53 sqm**

While we do try our very best, floor plans are produced as a guide only and we take no responsibility for the precise accuracy with which any property is represented



First Floor



Branksome Road, Brixton, SW2

