



Leander Road, Brixton, SW2

2 bedroom flat - conversion for sale

£600,000

Leasehold

Property Details

An appealing two double bedroom, two bathroom, split-level flat occupying the upper floors of one of the handsome Victorian terraces on Leander Road, a popular neighbourly street, perfectly located for the amenities and transport links in central Brixton and Herne Hill, a short stroll from the rolling green spaces of Brockwell Park. This beautifully airy apartment is well-presented and feels like a home as soon as you walk through the door. Spanning the width of the property is an expansive reception room, tastefully finished and featuring charming sash windows, with proportions to lounge and dine. Adjacent, the generous integrated kitchen has an abundance of storage. A convenient WC also resides on this floor. Upstairs are two sizeable double bedrooms set over slightly differing levels to create privacy and fitted with built-in wardrobes plus space for desks. Completing the upper floors is a roomy family bathroom, furnished with both shower and bath. Of further benefit, this spacious property has been lovingly cared for including but not limited to electrical upgrade, sash windows installed and a roof guarantee to 2034. Early registration of interest is advised.

Features

- Two double bedrooms
- Family bathroom plus WC
- Victorian split-level conversion
- 1,050 square feet of internal space
- Popular residential street
- Annual summer street party
- Brockwell Park in under two minutes
- Amenities and transport links of Brixton
- Herne Hill a ten minute walk away
- Chain-free

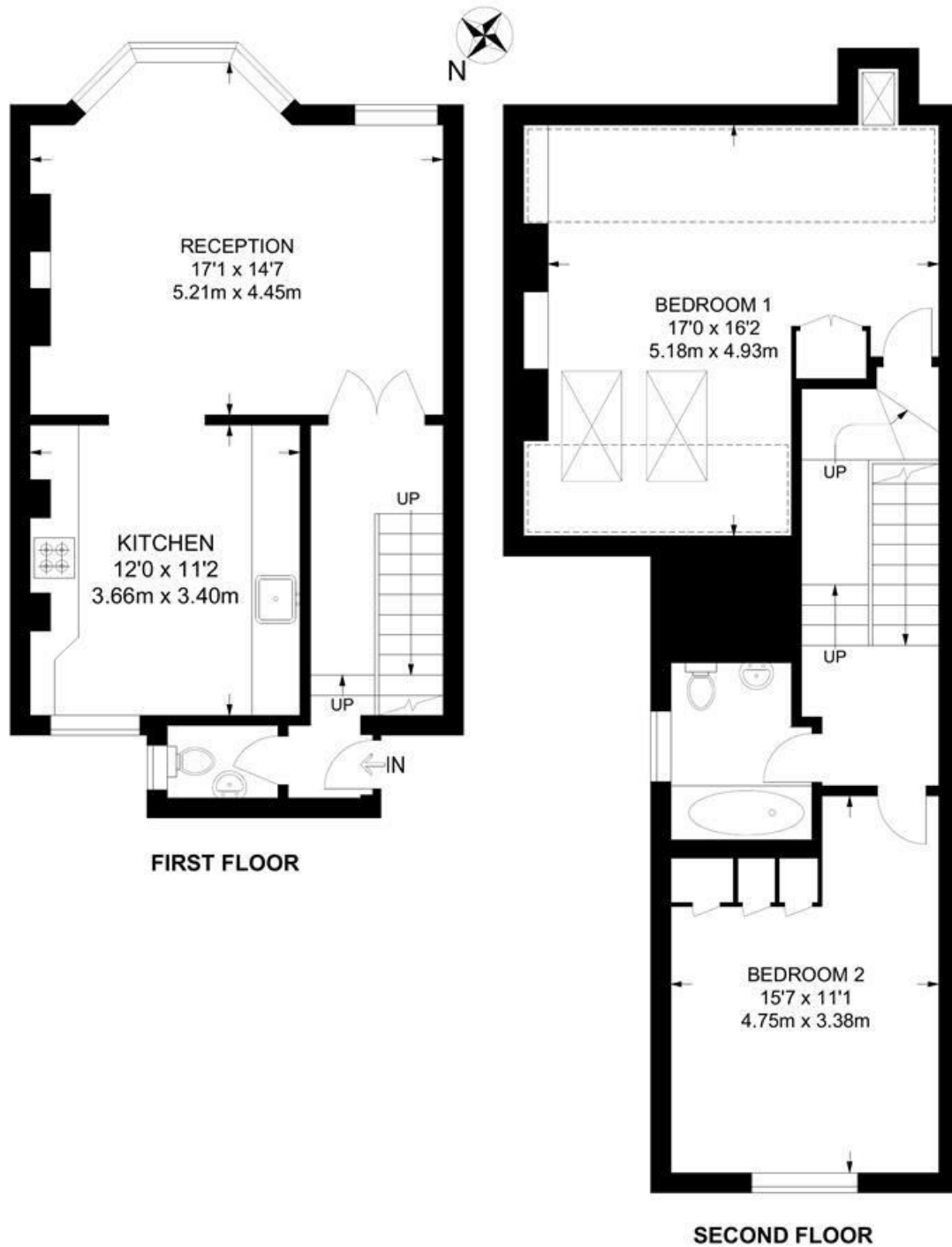
Council tax band D EPC rating (null)



Leander Road, Brixton, SW2

Leander Road, SW2
2 Bedroom Flat

APPROXIMATE GROSS INTERNAL AREA: **1050 SQ FT / 97.5 SQ M**



While we try our very best, floor plans are produced as a guide only and we take no responsibility for the precise accuracy with which any property is represented.

Leander Road, Brixton, SW2

