

Lambert Road, Brixton, SW2

Null bedroom flat to let

£311 Per Week

Furnished/unfurnished

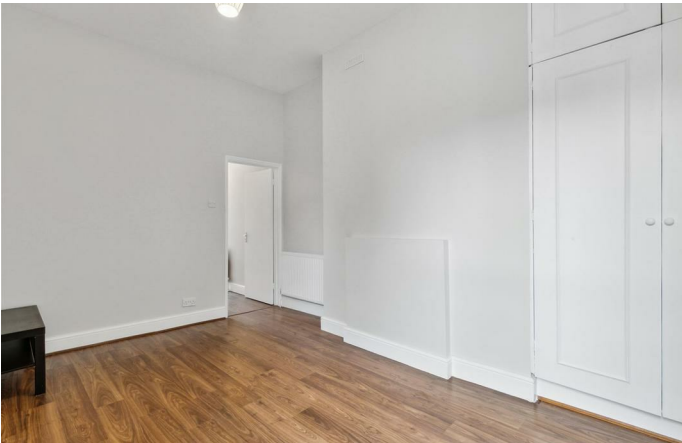
Property Details

A newly refurbished spacious studio flat, located on a popular road in Brixton. The studio flat is bright and airy with ample storage, it even has its very own front door off the street. The flat comprises of a long entrance hall leading to a good sized bedroom/reception with built in storage, a newly fitted modern family size bathroom, a bright and modern kitchen. The property is in sought after area, the vibrant nightlife of Brixton, perfectly located for anyone wanting to be close to the action yet far enough away to retain a sense of calm. Brixton town centre and Brixton Village are a stroll down Brixton Hill or a five-seven minute bus ride. Brockwell Park is approximately a ten-minute walk, which many local residents champion as one of London's best parks, across which is Herne Hill station within a fifteen-minute walk. Brixton Hill is a stone's throw, with its brilliant array of cafes, pubs and restaurants, such as F Mondays, Pizza Brixton, and the White Horse pub, to name a few. Living here you will benefit from all that Brixton offers, from the celebrated cuisine in POP Brixton to the music venues and nightlife the area is famous for and first stop on the Victoria Line at Brixton tube station.

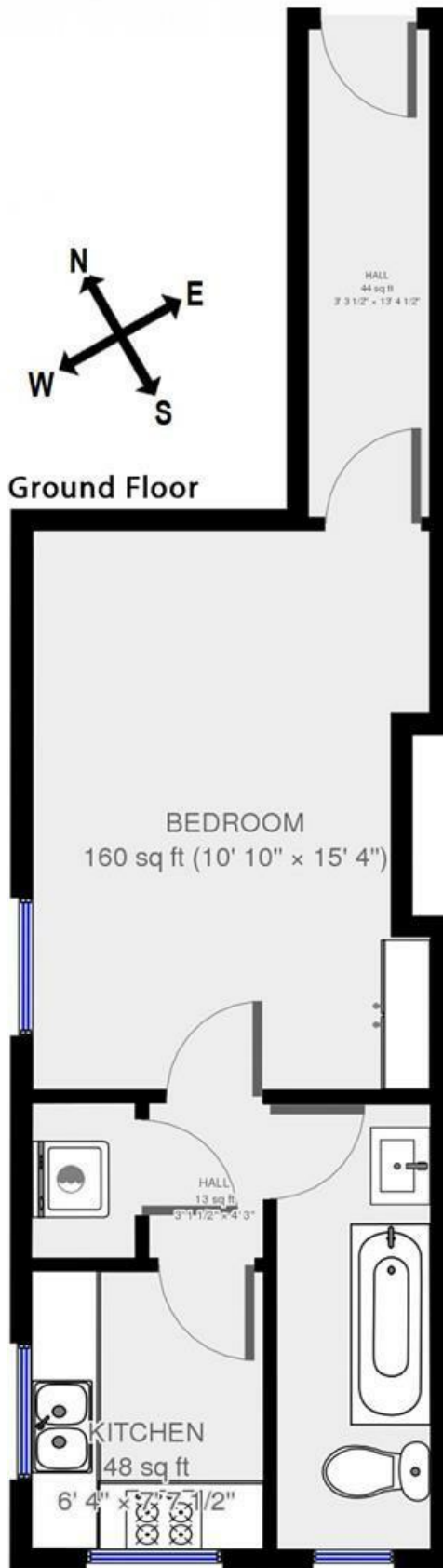
Council tax band B EPC rating D (66)

Features

- Studio flat
- Victorian conversion
- Bright and airy throughout
- Excellent transport links
- Private Entrance
- Close to Brockwell Park
- Short walk from Brixton



Lambert Road, Brixton, SW2



K

1 bed flat.

Approx internal area:

358 sqft 33 sqm

While we do try our very best, floor plans are produced as a guide only and we take no responsibility for the precise accuracy with which any property is represented

Lambert Road, Brixton, SW2

