

Hayter Road, Brixton, SW2

2 bedroom flat - conversion for sale

£715,000

Share of Freehold

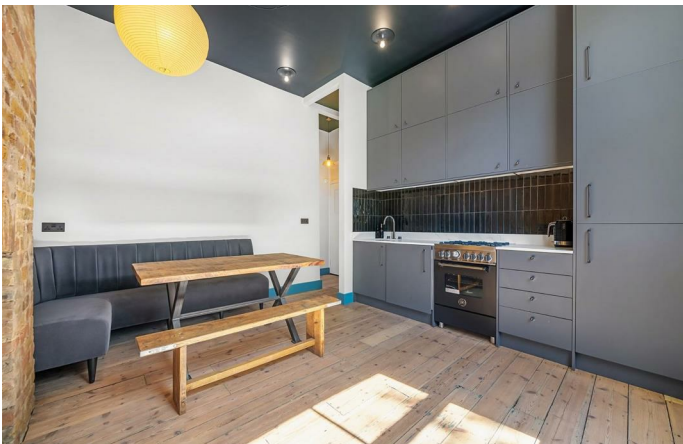
Property Details

A perfectly presented two double bedroom, two bathroom split-level South-facing garden flat on Hayter Road, a sleepy, residential street, six minutes to Brixton, with proximity to Clapham. The property has been upgraded by the vendor including, a new kitchen, the addition of an en-suite, new sash windows, updated insulation and flooring downstairs and the purchase of the freehold with the owners of the flat above. Bright and spacious, the reception has a grand floor to ceiling bay window and wooden floorboards. The kitchen provides storage within modern grey cabinetry, framing the range cooker. Exposed brickwork and wooden floors add to the ambience with a large dining table and garden views. The garden is leafy and low-maintenance, a tranquil sun-trap feeling wonderfully secluded. Stairs lead down to both of the spacious double bedrooms with built-in wardrobes, both presented with shuttered sash windows, brushed concrete flooring and cast iron radiators. The principle bedroom benefits from an en-suite, whilst the second bedroom is next to the main bathroom. Early registration of interest is strongly advised.

Council tax band D EPC rating C (75)

Features

- Two double bedrooms
- Two bathrooms
- South-facing private garden
- Victorian conversion
- Split over two floors
- Blend of period features and contemporary design
- Desirable neighbourly road
- Brixton a six-minute walk
- Clapham a short stroll in the other direction
- Share of freehold

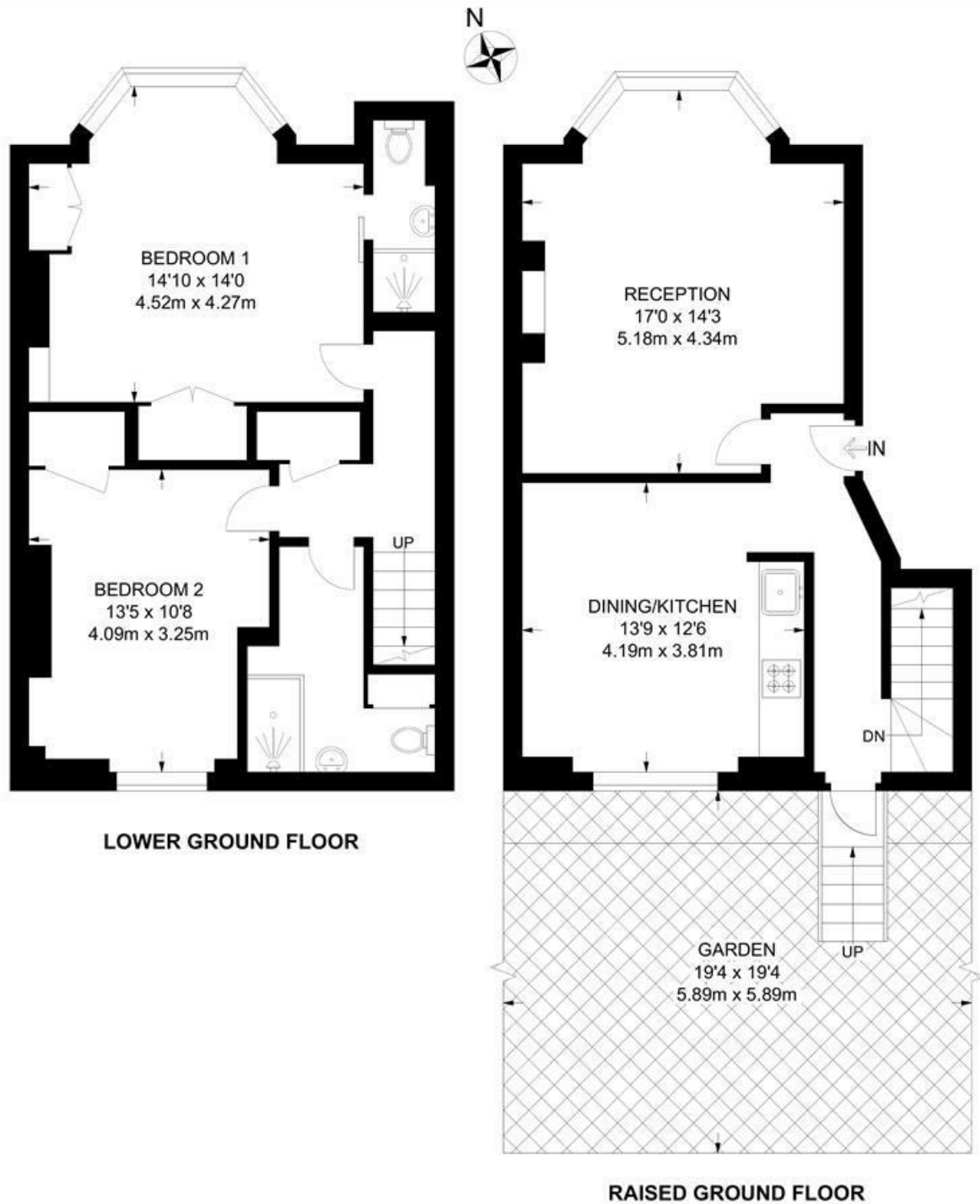




Hayter Road, Brixton, SW2

Hayter Road, SW2
2 Bedroom Flat

APPROXIMATE GROSS INTERNAL AREA: **970 SQ FT / 90.1 SQ M**



While we try our very best, floor plans are produced as a guide only and we take no responsibility for the precise accuracy with which any property is represented.

Hayter Road, Brixton, SW2

