



Mayall Road, Herne Hill, SE24

1 bedroom flat for sale

£450,000

Leasehold

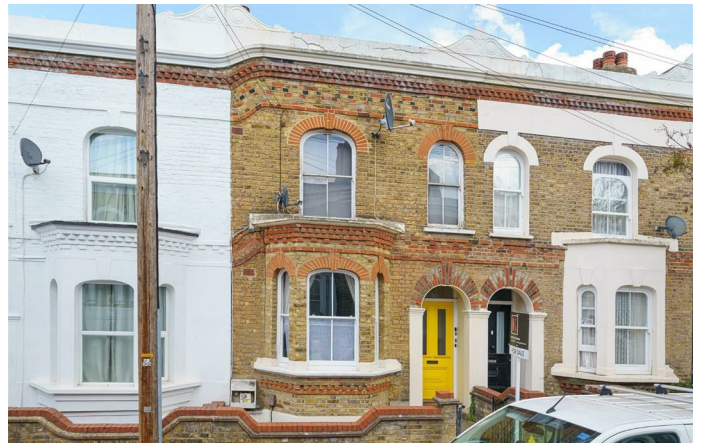
Property Details

A beautiful split-level one bedroom flat with private garden, on Mayall Road, a neighbourly street a short walk from vibrant Brixton, the village-esq Herne Hill and Brockwell Park. To the ground floor, the spacious reception room is flooded with natural light through the large bay windows, with characterful features including high, corniced ceilings and hardwood floors. Adjacent, the neutral double bedroom enjoys garden views, with sash windows and built in wardrobes. Downstairs, a separate dine-in kitchen is tastefully presented with wooden cabinetry and white-washed exposed brickwork, with dual aspect windows ensuring a welcoming environment in which to cook and dine. The modern bathroom boasts statement tiling, equipped with a roll-top bath with overhead shower. An additional space off the kitchen can be repurposed to suit the needs of the purchaser, currently being utilised as a handy home office. Additional storage is built-in to the rear of the study and under the stairs. Accessed from the kitchen, the pretty private garden is a low-maintenance spot, with additional light and privacy owing to its slightly raised position.

Features

- One double bedroom
- Private garden
- Victorian conversion
- Study area
- Split over two floors
- Separate kitchen and reception
- Central Brixton and Brockwell Park both a six-minute stroll
- Herne Hill an eight-minute walk
- Access to the Victoria Line, Rail and Thameslink
- Chain-free

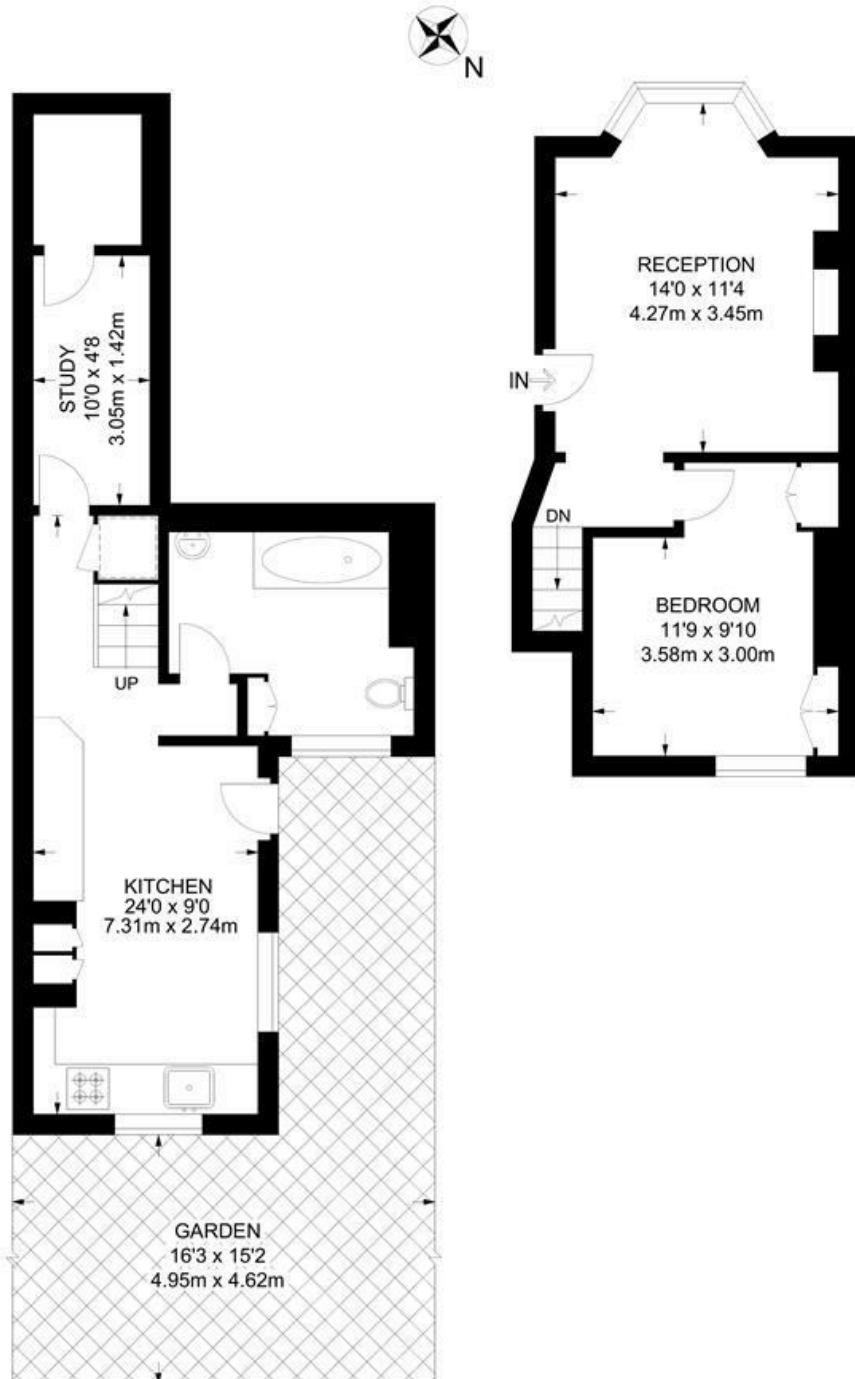
Council tax band C EPC rating D (64)



Mayall Road, Herne Hill, SE24

Mayall Road, SE24
1 Bedroom Flat

APPROXIMATE GROSS INTERNAL AREA: 638 SQ FT / 59.3 SQ M



While we try our very best, floor plans are produced as a guide only and we take no responsibility for the precise accuracy with which any property is represented.

Mayall Road, Herne Hill, SE24

