



Electric Avenue, SW9

2 bedroom flat to let

£460 Per Week

Part furnished

Property Details

A Bright and charming two double bedroom period flat, offering well-appointed space in an unrivalled location in the heart of Brixton. This fantastic flat will appeal to a wide range of tenants due to the two comfortable double bedrooms and buzzing atmosphere of Electric Avenue. Electric Avenue gets its name by being the first market street to be lit by electric lights and to this day is a core asset of the Brixton community.

Tucked away securely and set back from the commercial buzz of central Brixton, this bright and modern flat has been considerably thought out to the open plan living space and handy built-in storage. The heart of the home is the pretty reception room, a cosy South-facing space complete with an integrated, white gloss kitchen and a trendy breakfast bar. Both bedrooms are comfortable doubles with decent built-in storage and large sash windows that flood these spaces with natural light. A contemporary bathroom separates the two bedrooms, conveniently located and providing a desirable level of privacy between these two spaces.

As far as locations go, it doesn't get much better: situated within touching distance of the restaurants, cafes and boutique shops in Brixton Village and on Coldharbour Lane, such as Mamma Dough Pizza, Okan Ramen and Caya coffee shop, to name a few. Windrush Square, The Ritzy and POP Brixton are also just around the corner whilst Brixton tube and train stations (first stop on the Victoria Line), offer

Features

- Two double bedrooms
- Central location
- Sleek and modern finishes
- Bright and airy
- Excellent transport links
- Local amenities of Coldharbour Lane & Brixton High Street
- Victoria Line

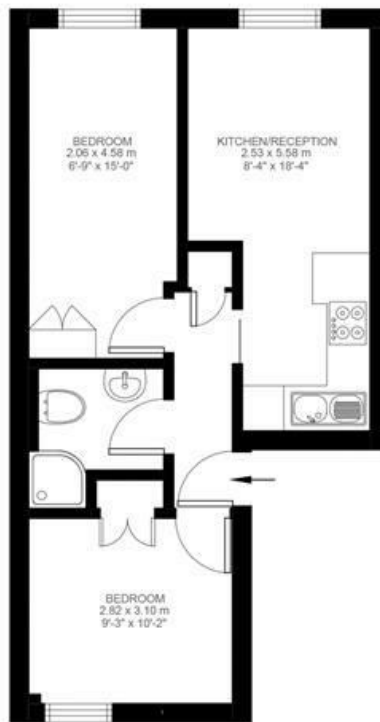
Council tax band C EPC rating E (41)



Electric Avenue, Brixton, SW9

2 bedroom flat

Approximate internal area: 402 sqft 37 sqm



First Floor



While we do try our very best, floor plans are produced as a guide only and we take no responsibility for the precise accuracy with which any property is represented.

Electric Avenue, SW9

