



**Plato Road, Brixton, SW2**

2 bedroom flat to let

**£420 Per Week**

Furnished

## Property Details

This large, middle floor, Victorian apartment is nestled on one of the lovely, residential streets between Brixton and Clapham North. The flat has two, good sized double bedrooms and a family sized bathroom. The open plan reception and modern kitchen have a spacious feel and are flooded with light from four, large windows. As Brixton and Clapham North Stations are both a short distance away, there are plenty of transport links, as well as great restaurants, pubs and shopping nearby. PLEASE NOTE, TENANTS DO NOT HAVE ACCESS TO THE FLAT ROOF TO THE REAR.

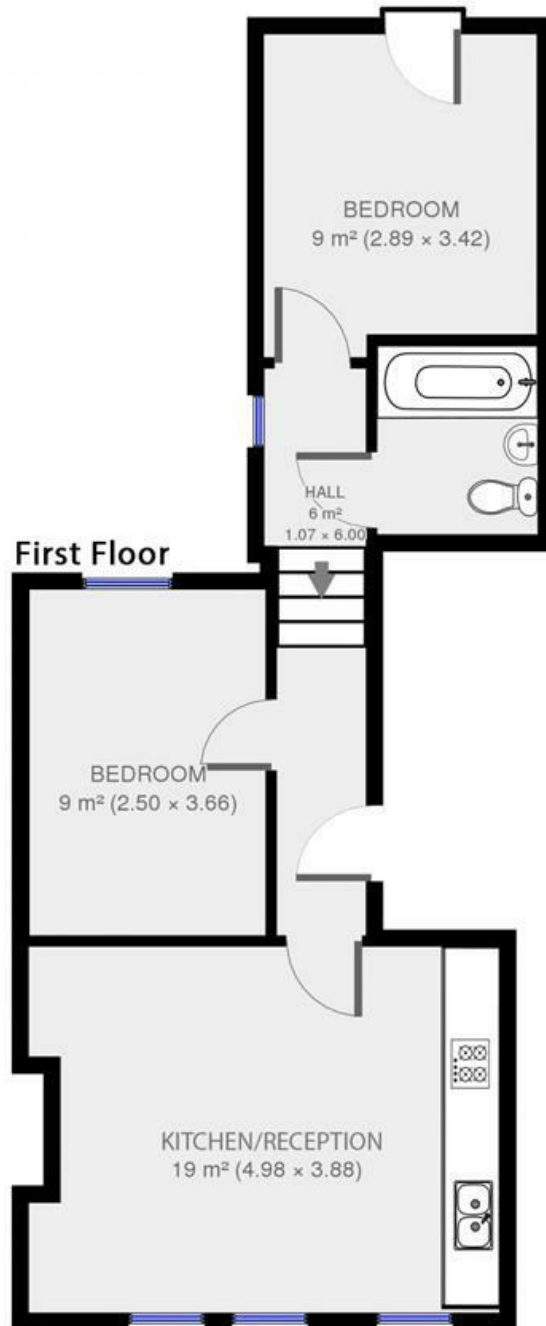
## Features

- 2 bedrooms
- 1 reception
- 1 bathroom
- Victorian
- Bright and airy throughout
- Close to transport links

Council tax band C      EPC rating C (72)





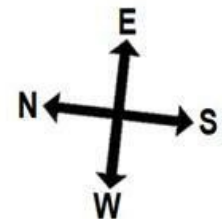


2 bed flat.

Approx internal area:

**538 sqft 50 sqm**

While we do try our very best, floor plans are produced as a guide only and we take no responsibility for the precise accuracy with which any property is represented



Plato Road

Plato Road, Brixton, SW2

