



**Appach Road, Brixton, SW2**

3 bedroom flat to let

**£675 Per Week**

Furnished

## Property Details

A three bedroom conversation flat comprises of three spacious bedrooms having direct access to your very own private garden perfect for the summer months, and a lovely clean modern bathroom and a large open plan living area with a lounge section, a dining section and a good sized, well-appointed kitchen. This property is very close to all the hustle and bustle of Brixton with the funky bars and restaurants and only a short walk away. Brixton tube station is also a short walk from the property giving you access to the Victoria line straight into the city.

## Features

- Three double bedrooms
- Family bathroom
- Open plan reception and kitchen
- Private garden
- Victorian conversion
- Bright and airy throughout
- Excellent transport links

Council tax band D    EPC rating D (59)





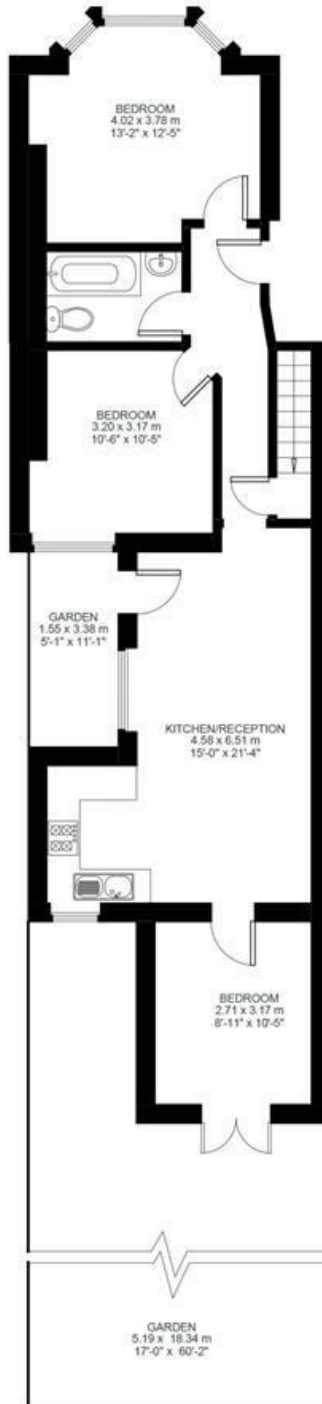


3 Bed flat  
 Approx internal area:

**838 sqft 78 sqm**

While we do try our very best, floor plans are produced as a guide only and we take no responsibility for the precise accuracy with which any property is represented

Appach Road



Cellar



Ground Floor



Appach Road, Brixton, SW2

