

**Branksome Road, Brixton, SW2**

2 bedroom flat to let

£430 Per Week

Furnished

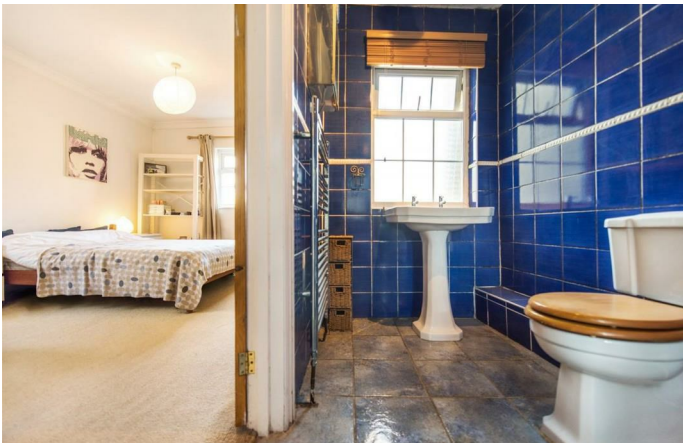
Property Details

A stylish split level two bedroom Victorian conversion flat sandwiched between the vibrant towns of Clapham and Brixton. This stunning property comprises a beautifully decorated reception room, which comes with a charming feature fireplace, built-in floor to ceiling bookshelves and large windows allowing plenty of natural light to fill the room. There is a separate kitchen which has a fitted hatch window through to the reception room, breakfast bar and ample storage space. There are a further two double bedrooms one having the added benefit of an en-suite bathroom and a modern sleek family size bathroom. Branksome Road is popular for its proximity to both Brixton and Clapham town centres. You'll benefit from the amenities in both areas, a few examples include the green open spaces of Brockwell Park and Clapham Common and access to both the Northern and Victoria lines.

Council tax band D EPC rating D (62)

Features

- Split Level
- Two Double bedrooms
- En-Suite Bathroom
- Walking Distance to both Clapham and Brixton
- Fantastic Travel Links
- Furnished
- Light and airy



Branksome Road, Brixton, SW2

Branksome Road, Brixton, SW2

