



Milkwood Road, SE24

3 bedroom bungalow to let

£577 Per Week

Part furnished

Property Details

This wonderful three double bedroom flat is located within a short walk from Herne Hill over ground station, allowing for speedy access into Central London. Brixton is also just a walk away and has an abundance of restaurants, bars and other amenities, such as Brixton tube station, to enjoy. The flat, which is bright and airy throughout, comprises a spacious reception area and a separate kitchen, three double bedrooms an en-suite shower and a generous size bathroom. The property also comes with its own private patio area.

Features

- Three double bedrooms
- Family bathroom
- Reception
- Separate kitchen
- Private patio area
- En-suite shower
- Close to Brockwell Park

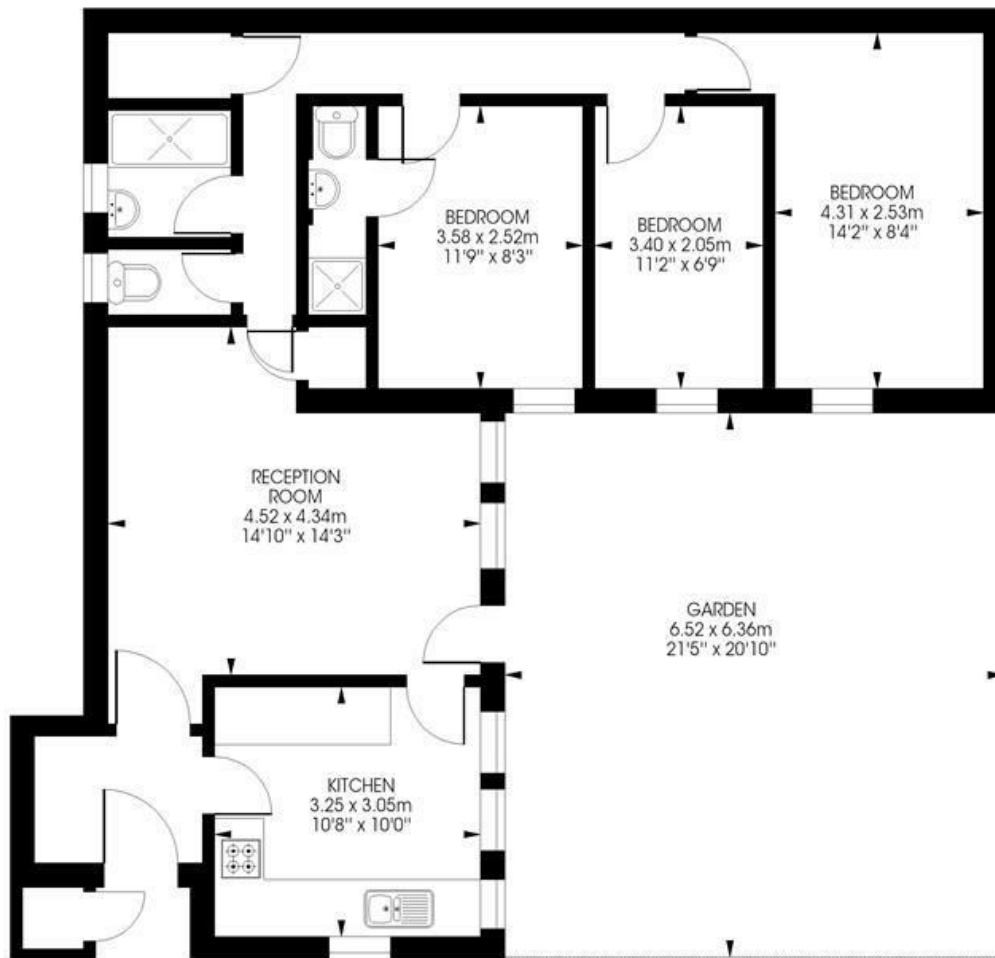
Council tax band D EPC rating D (65)



Milkwood Road, SE24

Milkwood Road, SE24
3 bedroom flat

Approximate internal area: **831 sqft / 77.2 sqm**



Ground Floor



While we try our very best, floor plans are produced as a guide only and we take no responsibility for the precise accuracy with which any property is represented.

Milkwood Road, SE24

