



Leander Road, Brixton, SW2

2 bedroom flat to let

£495 Per Week

Furnished

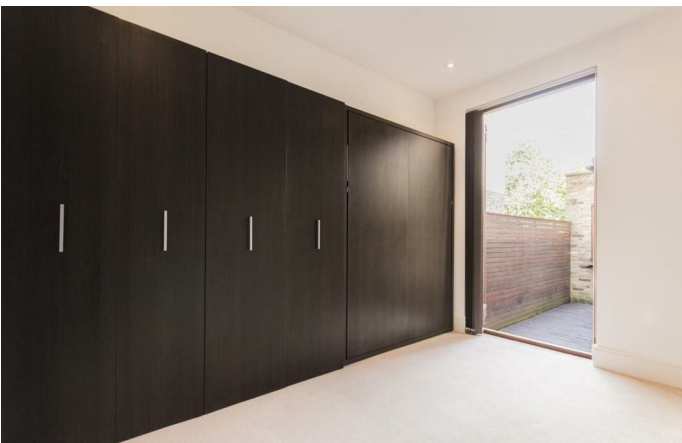
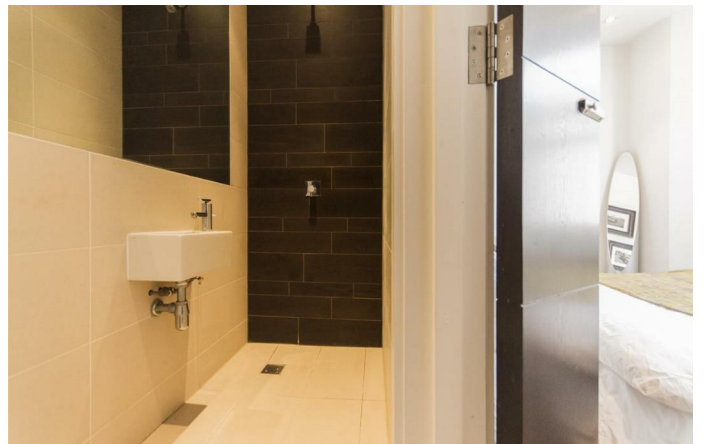
Property Details

This great flat is part of a lovely Victorian terraced house situated on a sought after road in the Josephine Avenue conservation area. The flat comes with an enormous kitchen/reception to the rear that opens straight out onto the large courtyard garden through full width concertina doors. The kitchen is fitted with all the mod cons and stylish grey units as well as dark hardwood floors and a bright bay window. The property also comprises two double bedrooms including a bright master bedroom, that benefits from its own luxurious en-suite wet room, and a second bedroom that doubles as a study with a deluxe pull down bed. The flat is completed by a shared family bathroom that is finished to a high standard. Only minutes from Brixton Hill and Effra Road means that tenants will benefit from a wide array of bars restaurants and local shops as well as the wonders of green open spaces of Brockwell Park.

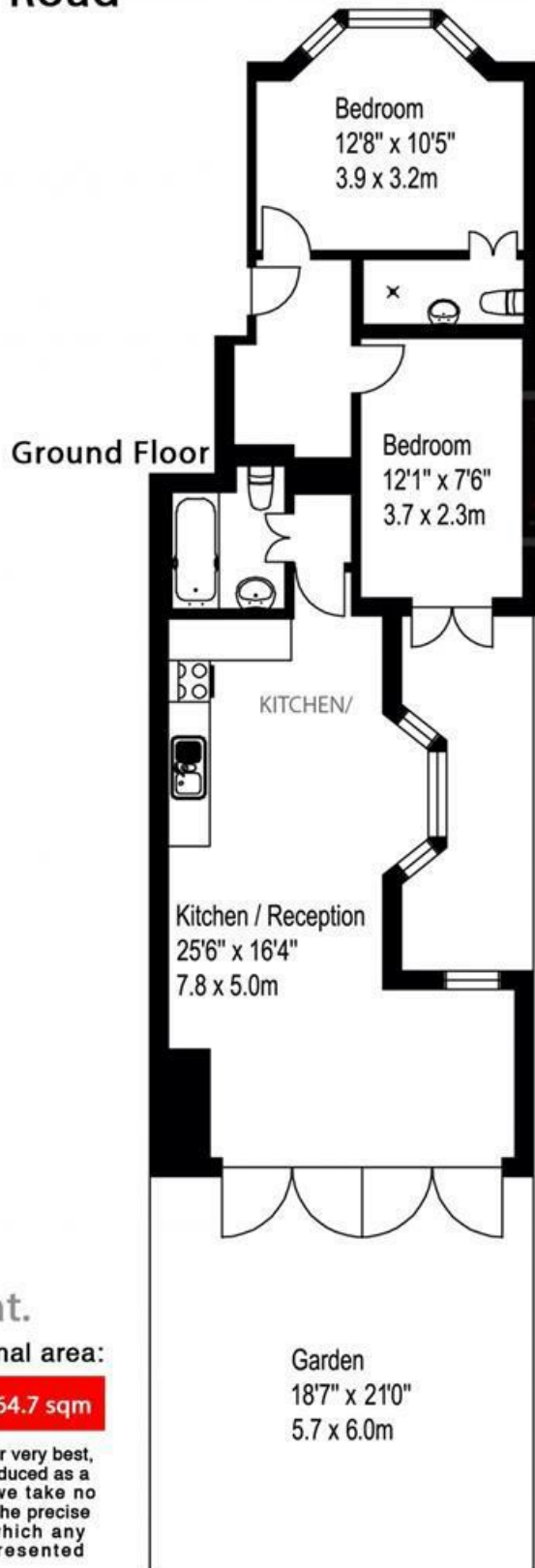
Council tax band C EPC rating D (66)

Features

- Two bedroom
- Conservation area
- Victorian
- Private garden
- Close to Brockwell Park
- Short walk to Central Brixton



Leander Road

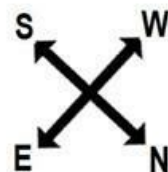


2 bed flat.

Approx internal area:

697 sqft 64.7 sqm

While we do try our very best, floor plans are produced as a guide only and we take no responsibility for the precise accuracy with which any property is represented



Leander Road, Brixton, SW2

