



Ducie Street, Clapham, SW4

3 bedroom flat to let

£657 Per Week

Furnished

Property Details

Keating Estates are proud to present this large three double bedroom Victorian conversion flat. The property is split over two levels and comprises a spacious living room, three very good sized double bedrooms a separate modern stylish kitchen with ample storage. The property also benefits from a separate WC and bathroom. The flat is a beautifully detailed late Victorian townhouse situated in a sought after residential street in a lovely residential pocket of Clapham that sits about five minutes from Clapham North station and 10 minutes from Brixton BR and Victoria line stations. you also have the delights of Clapham Common only a few moments away with all its pubs, bars and high street stores.

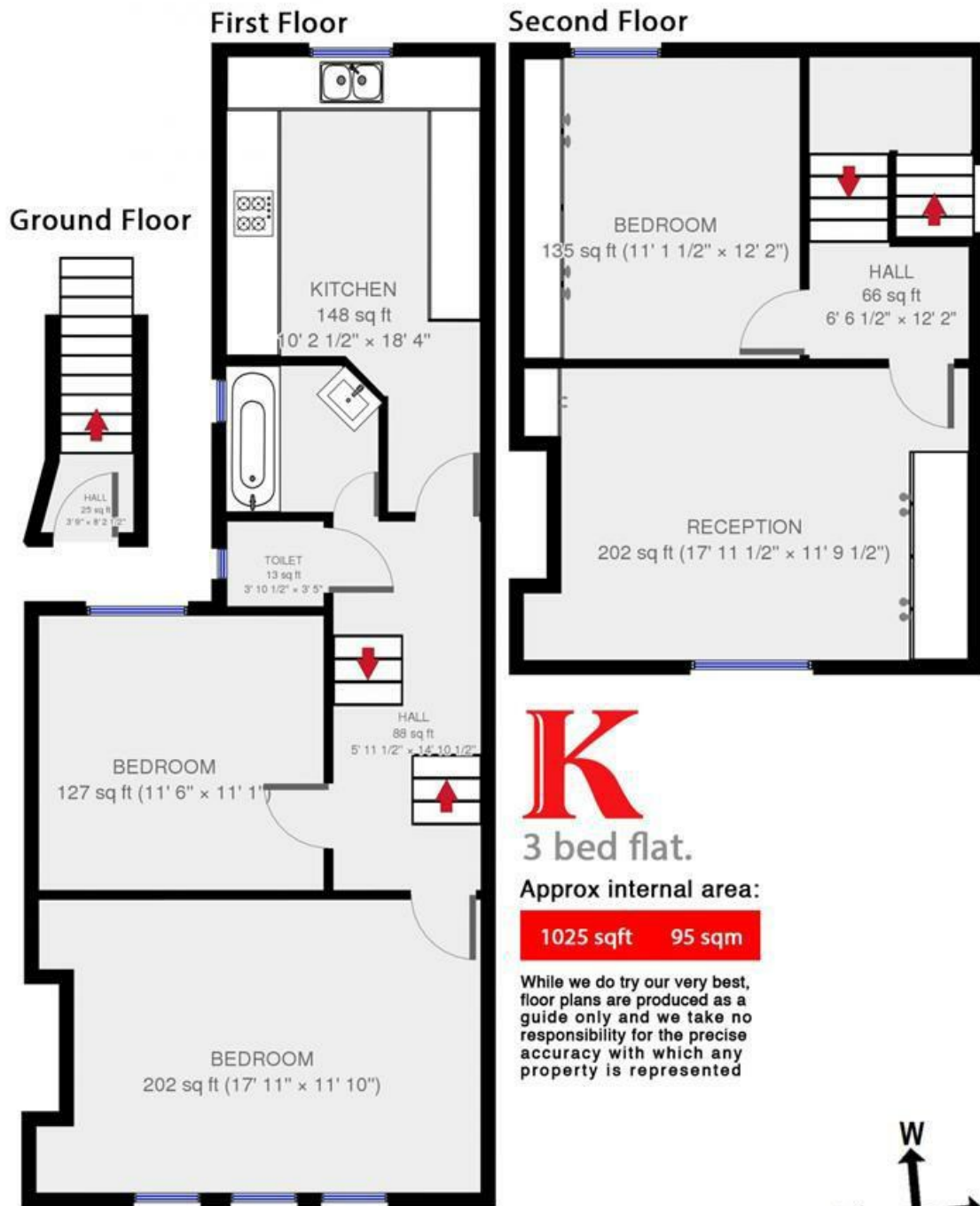
Council tax band D EPC rating D (66)

Features

- Central location
- Close to transport links
- 3 Bedrooms
- Separate Kitchen
- Bright and Airy
- Newly refurbished



Ducie Street, Clapham, SW4

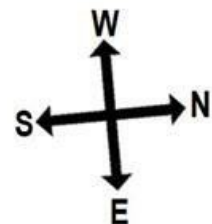


K
3 bed flat.

Approx internal area:

1025 sqft 95 sqm

While we do try our very best, floor plans are produced as a guide only and we take no responsibility for the precise accuracy with which any property is represented



Ducie Street

Ducie Street, Clapham, SW4

