



**Lynette Avenue, Clapham, SW4**

2 bedroom flat to let

**£475 Per Week**

Furnished

## Property Details

A wonderful two double bedroom first floor flat located within one of Claphams most popular areas. We are pleased to offer this well located, spacious and beautifully presented two double bedroom Victorian first floor flat. The accommodation comprises of a modern open plan fitted kitchen and reception room, modern bathroom suite and two large double bedrooms. The property is located within a 30 second walk to the Common, and a short walk to the high street tube & train stations, local shops and restaurants.

## Features

- Close to the park
- Close to transport links
- Furnished
- Two bedrooms
- Light and airy
- Close to town centre

Council tax band D    EPC rating C (71)



## Lynette Avenue

Approximate Gross Internal Area = 624 sq ft/ 58 sq m

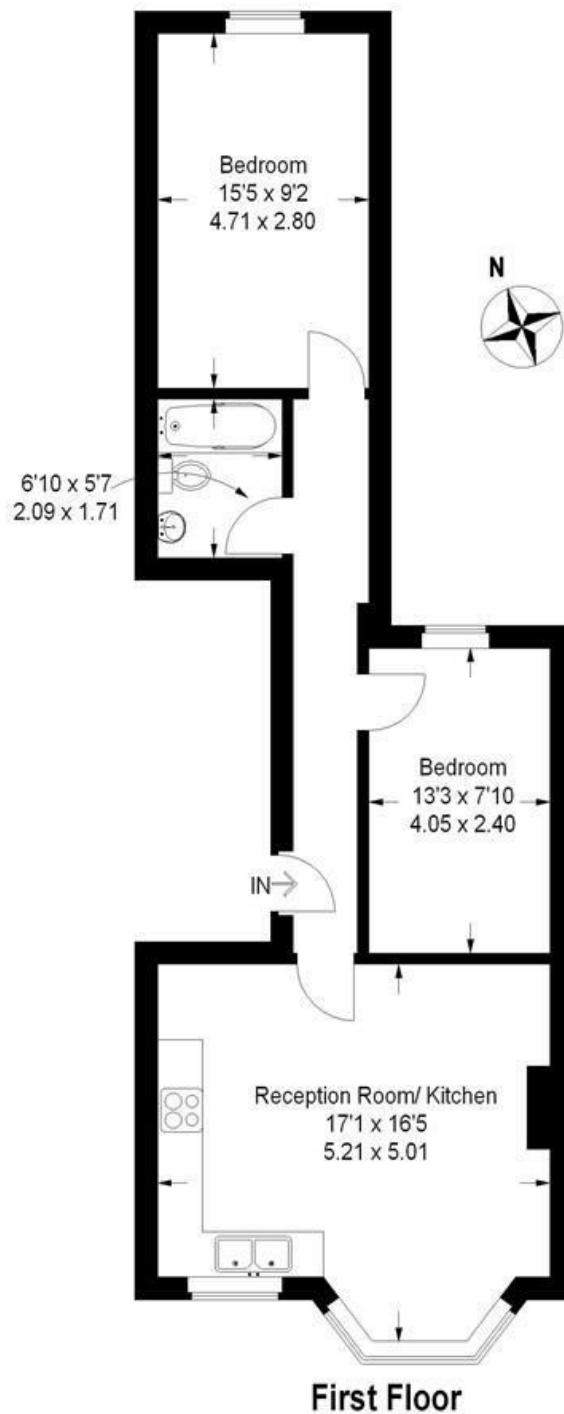


Illustration for identification purposes only. measurements are approximate. Drawn for Keating Estates.

Lynette Avenue, Clapham, SW4

