

Branksome Road, Brixton, SW2

2 bedroom flat to let

£480 Per Week

Furnished

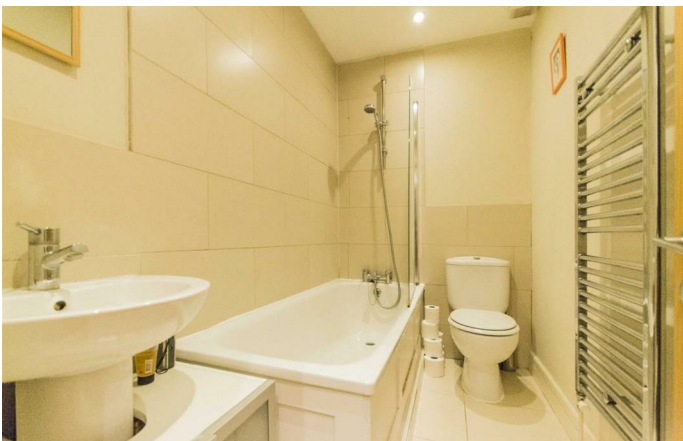
Property Details

An exquisite and spacious two bedroom flat complete with a stunning private garden located on a lovely residential street between Clapham and Brixton. This lovely property comprises a big open plan reception room/kitchen, two good-sized double bedrooms, a sleek modern bathroom and private garden. Living here you are situated a ten minute walk from Brixton tube station and high street amenities, Clapham High Street is also a similar distance, offering excellent transport links with Northern Line underground stations, Clapham High Street station on the Overground and numerous bus routes to other areas of London. Venn Street and its multitude of restaurants and bars, the green open spaces of Clapham Common are all within walking distance

Features

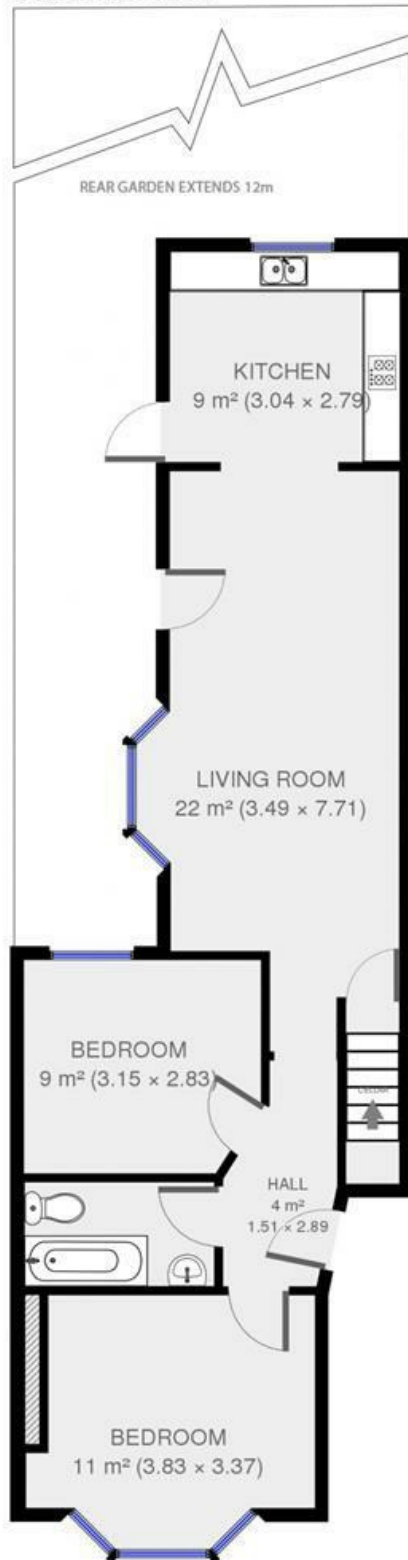
- Two bedrooms
- Private garden
- Open plan living
- Close to Brockwell park
- Good transport links
- Close to town centre

Council tax band D EPC rating D (59)



Branksome Road, Brixton, SW2

Ground Floor

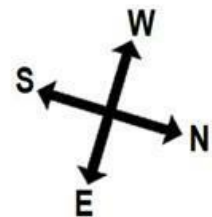


2 bed flat.

Approx internal area:

1453 sqft 61 sqm

While we do try our very best, floor plans are produced as a guide only and we take no responsibility for the precise accuracy with which any property is represented



Branksome Road

Branksome Road, Brixton, SW2

