

**Brixton Hill, Brixton, SW2**

2 bedroom flat to let

**£470 Per Week**

Furnished

## Property Details

Want to enjoy the liveliness of Brixton whilst being a 5 minute walk from Brockwell park? This property comprises of two double bedrooms, a separate eat-in-kitchen adjacent to a bathroom and a light, airy reception room. The flat is set-back from Brixton Hill and accessed from an attractive tree lined Victorian terraced street called Josephine Avenue, which is surrounded by similarly sought after roads. The property is within a ten minute walk to Brixton tube station and all it's surrounding amenities. This property is perfect for professionals starting out wanting the energy from Brixton, whilst being able to escape to a refreshing public green land. (\*Tenants do not have access to the roof terrace\*)

Council tax band D      EPC rating D (66)

## Features

- Victorian conversion
- 2 spacious double bedrooms
- Close to transport links
- Short walk to Brockwell park
- Bright and airy
- Tenants do NOT to access the roof terrace



## Brixton Hill

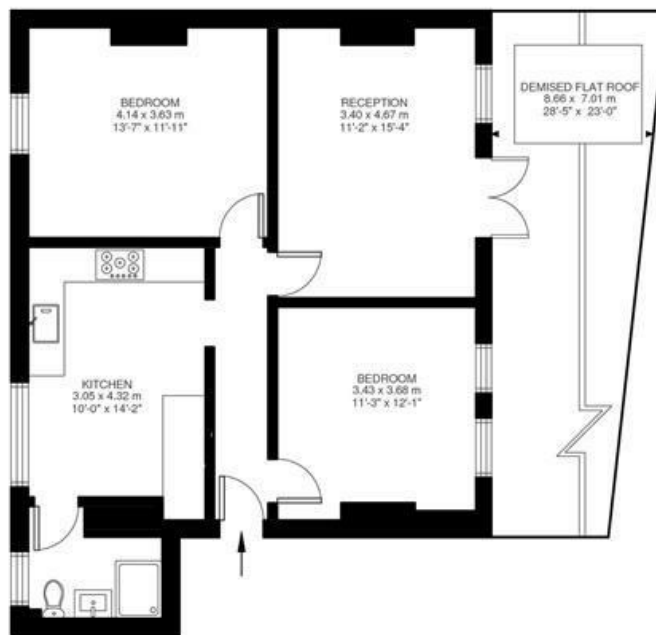
# K

2 Bed flat

Approx internal area:

**761 sqft 71 sqm**

While we do try our very best, floor plans are produced as a guide only and we take no responsibility for the precise accuracy with which any property is represented



First Floor





Brixton Hill, Brixton, SW2

