



Voltaire Road, Clapham, SW4

2 bedroom flat - conversion for sale

£599,950

Leasehold

Property Details

Originally a three-bedroom flat, the current owners have completely refurbished and re-arranged the layout in order to create a fantastically proportioned two double bedroom, two bathroom property. Combined with the wide hallway and bi-folding doors into the reception, the property truly offers a sense of space. The open-plan living area displays this beautifully, a bright and airy room with a feature fireplace and multiple large sash windows complete with shutters that fill the room with natural light. Both bedrooms are peacefully positioned on the other side of the building overlooking the gated courtyard. The principal bedroom boasts generous storage options and a sleek en-suite bathroom. The family-sized bathroom completing the flat is equally as modern and stylish as the rest of the property, complete with high-end fixtures and fittings. The property also benefits from a private and secure, off-street allocated parking space.

Features

- Two double bedrooms
- Two bathrooms
- Over 810 square feet of internal space
- Period conversion, quietly tucked away off the high street
- Private off-street allocated parking space
- Bright and airy throughout
- Tasteful finishes and neutral décor
- Fantastic transport links within close proximity
- Local amenities of Clapham High Street

Council tax band D EPC rating (null)



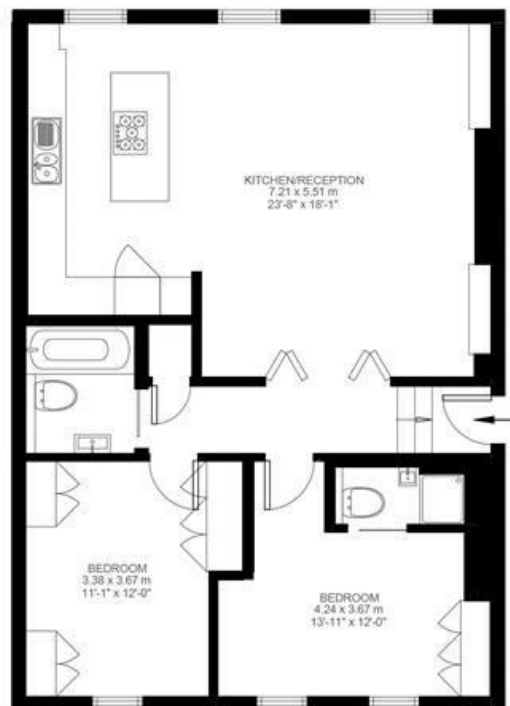


Voltaire Road, Clapham, SW4

Voltaire Road, Clapham, SW4

2 Bedroom Flat

Approximate internal area: 811 sqft 75 sqm



Second Floor



While we do try our very best, floor plans are produced as a guide only and we take no responsibility for the precise accuracy with which any property is represented.

Voltaire Road, Clapham, SW4

