



Dalyell Road, Brixton, SW9

2 bedroom flat - conversion for sale

£710,000

Leasehold

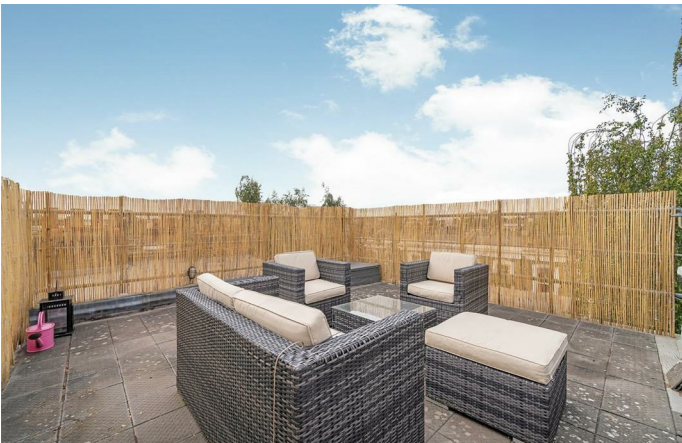
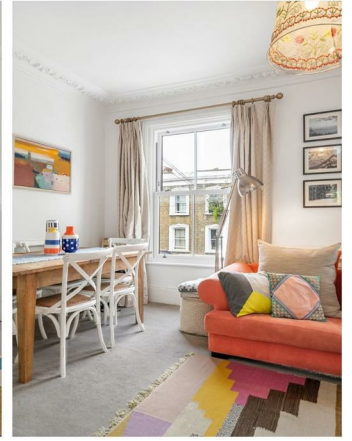
Property Details

A stunning two double bedroom flat with two private terraces, in a Victorian house within the sought-after Brixton, Stockwell and Clapham triangle. Owing to the elevated position on the upper floors, the property is exceptionally bright and private both inside and outside on the terraces. Beautifully presented, the large reception room boasts ornately corniced ceilings, shelving and dual sash windows. A characterful archway leads to the spacious kitchen, which offers generous storage along both walls, with integrated appliances. Large pane sliding doors leading out to the first of the terraces, especially sunny in the mornings. Upstairs, the larger roof terrace is the only one on the street, a peacefully private and low maintenance with amazing views. Nestled quietly over the top floor, both bedrooms are generous doubles with fitted wardrobes and shelving. The bathroom, has both bath and overhead shower and a stylish finish.

Features

- Two double bedrooms
- Two private terraces
- Victorian conversion
- Split over two floors
- Characterful features
- Bright and airy throughout
- Clapham and Brixton both an eight-minute walk
- Access to the Victoria and Northern lines plus the Overground

Council tax band D EPC rating D (68)

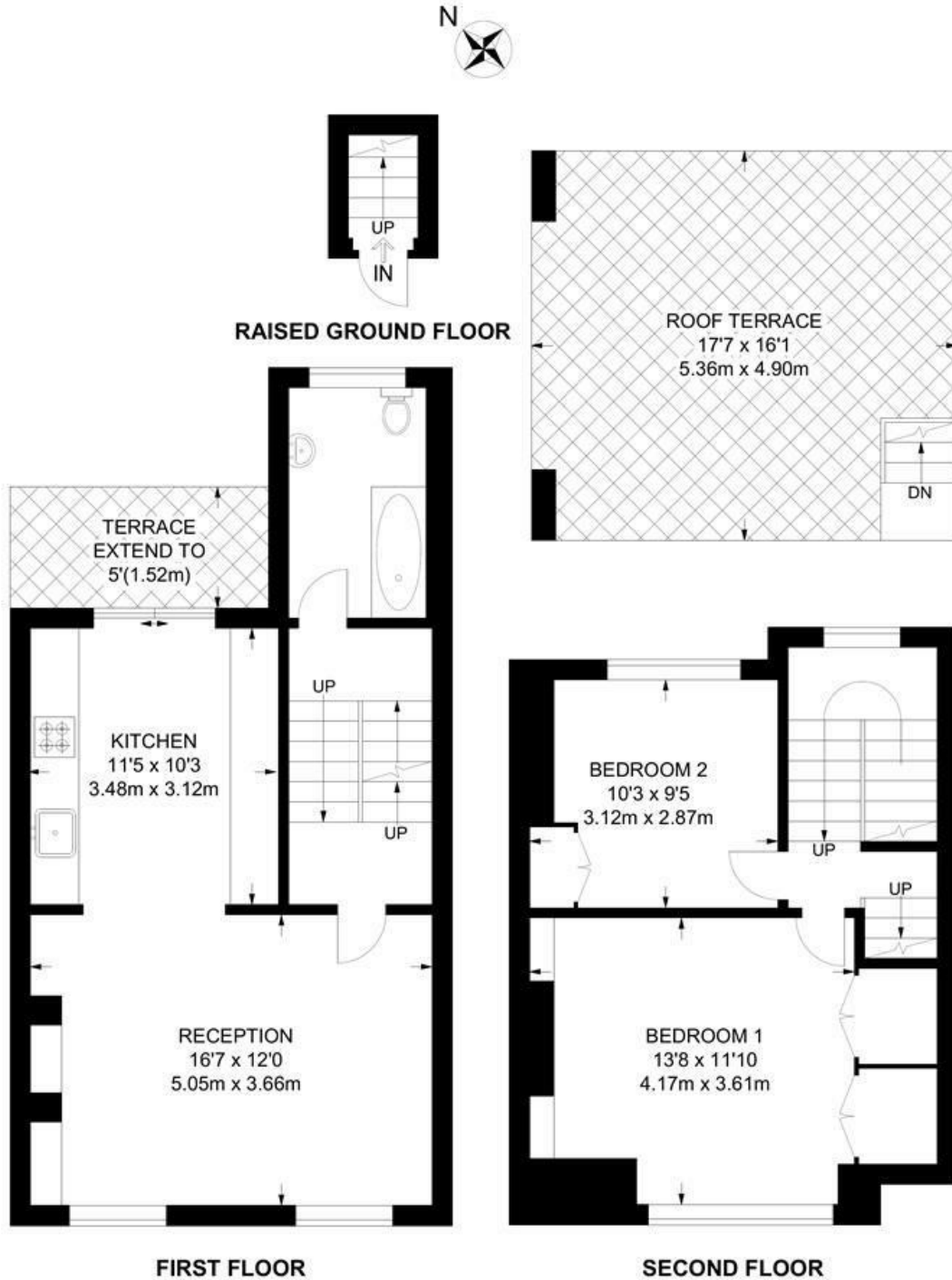




Dalyell Road, Brixton, SW9

Dalyell Road, SW9
2 Bedroom Flat

APPROXIMATE GROSS INTERNAL AREA: **832 SQ FT / 77.3 SQ M**



While we try our very best, floor plans are produced as a guide only and we take no responsibility for the precise accuracy with which any property is represented.

Dalyell Road, Brixton, SW9

