

Corrance Road, Brixton, SW2

3 bedroom flat to let

£650 Per Week

Furnished

Property Details

Spacious and sleek three double bedroom, split-level Victorian conversion garden flat.

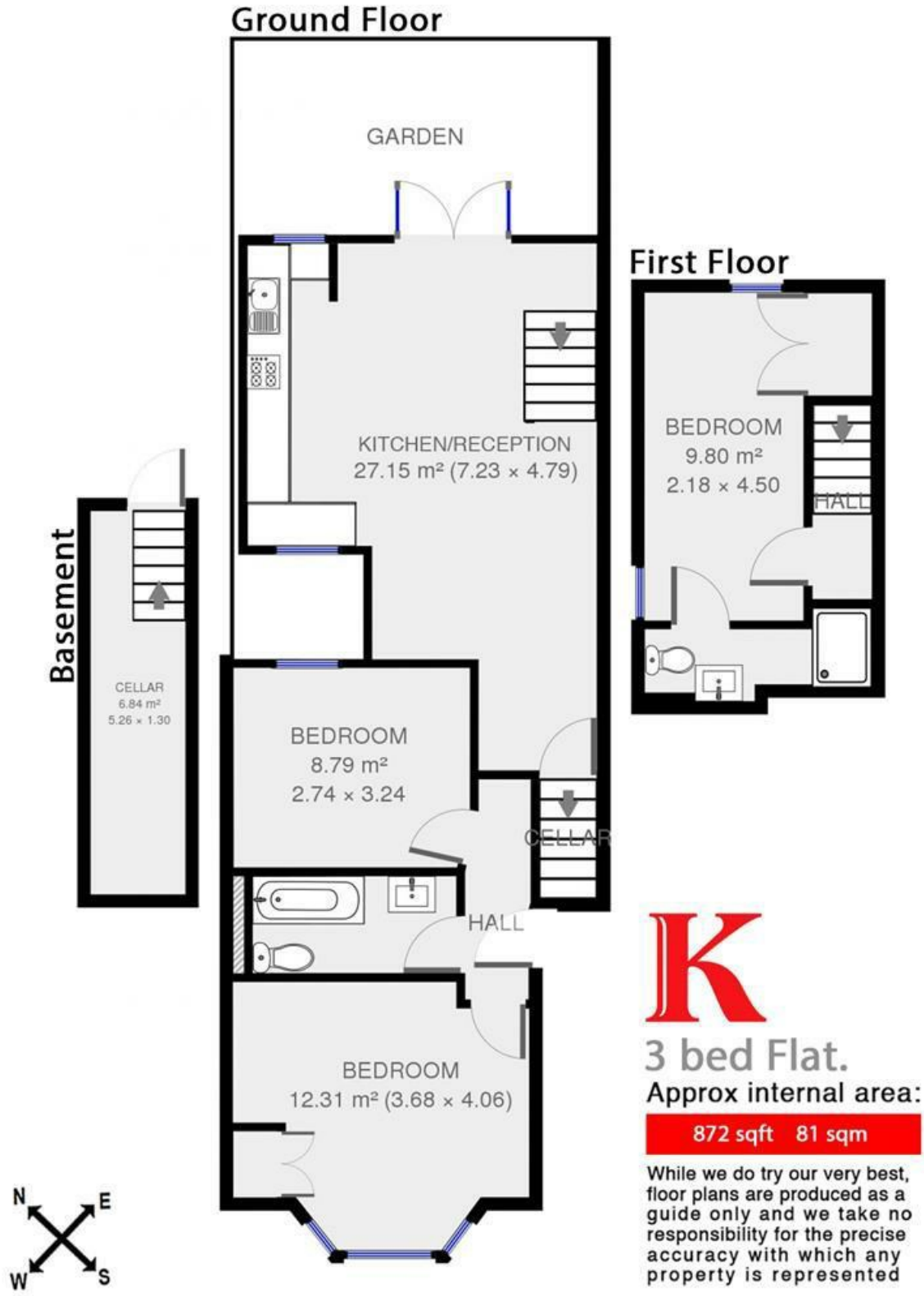
Features

- Private garden
- Bright and airy throughout
- Three double bedrooms
- Large open plan reception and kitchen area
- Family bathroom and en-suite
- Under a 13 minute walk to Brixton station
- Close to Brockwell park

Council tax band C EPC rating D (65)



Corrance Road



3 bed Flat.

Approx internal area:

872 sqft 81 sqm

While we do try our very best, floor plans are produced as a guide only and we take no responsibility for the precise accuracy with which any property is represented

Corrance Road, Brixton, SW2

