

Rosebery Road, Clapham, SW2

2 bedroom flat to let

£550 Per Week

Furnished

Property Details

This two double bedroom, two bathroom, split-level, Victorian conversion flat in a lovely residential road sandwiched between Brixton and Clapham. The property comprises a stunning, loft style, open-plan reception and kitchen with vaulted ceilings, feature fireplace and double doors that open out onto a private balcony. The two double bedrooms are both a fantastic size and both have separate selling points. Vaulted ceilings are a theme throughout this property, one double bedroom has this spacious feature and the other double bedroom is complete with a beautifully finished, en-suite bathroom. The main bathroom is contemporary and the property is split-over various levels to add to the light and airy feel throughout. The property is a 10 to 15 minute walk to both Clapham Common and Brixton and all that these two 'in-demand' areas have to offer. Multiple buses run up and down Kings Avenue and offer a speedy route to the tube stations for commuters. This is a lovely flat and we recommend early registration of interest.

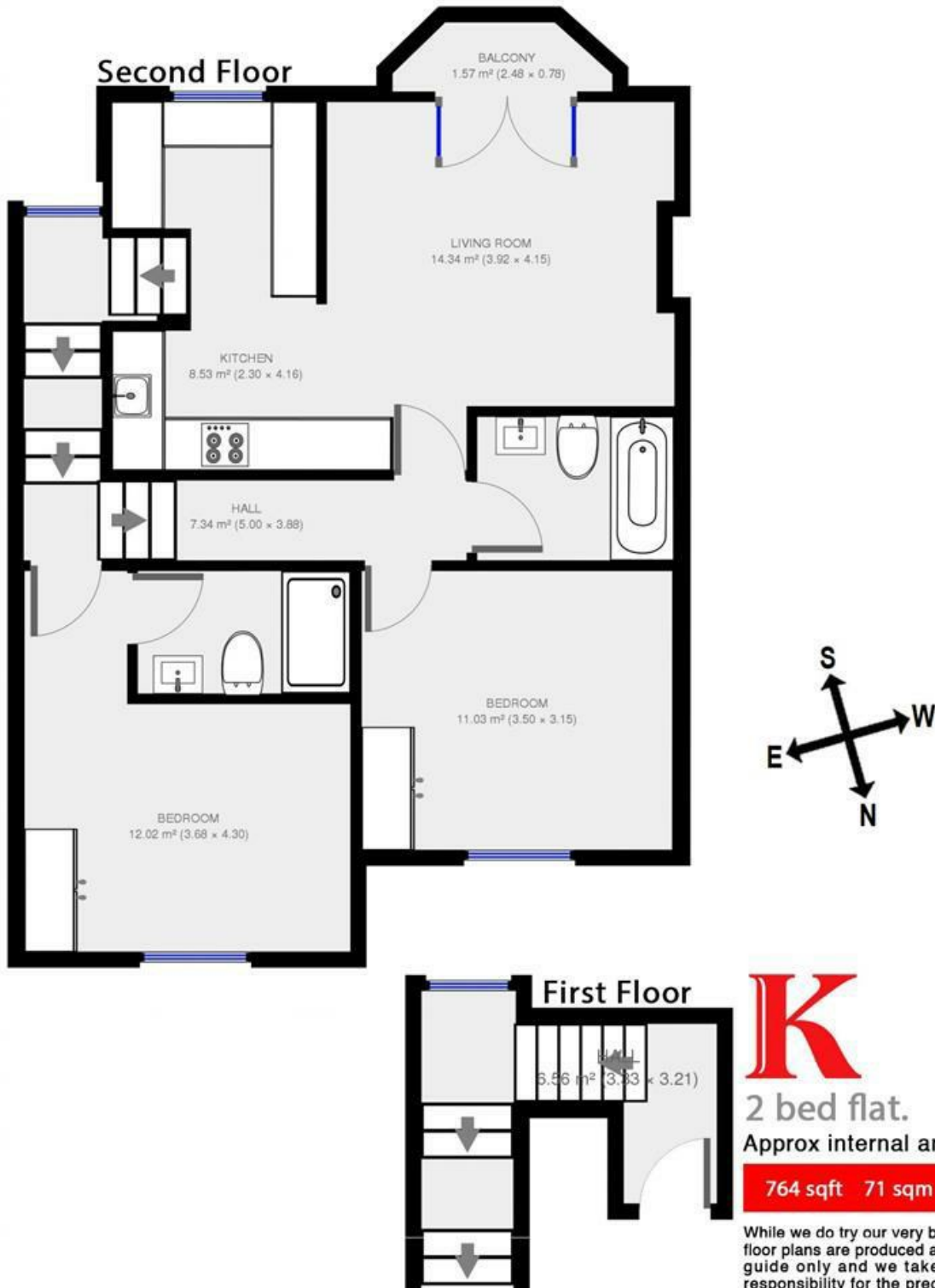
Features

- Two doubles
- Two bathrooms
- Split-level
- Victorian conversion
- Bright and airy
- Excellent transport links
- Light and airy

Council tax band D EPC rating E (45)



Rosebery Road



2 bed flat.
Approx internal area:

764 sqft 71 sqm

While we do try our very best, floor plans are produced as a guide only and we take no responsibility for the precise accuracy with which any property is represented

Rosebery Road, Clapham, SW2

