

**Effra Parade, Brixton, SW2**

1 bedroom flat to let

**£390 Per Week**

Furnished

## Property Details

A one double bedroom top floor flat in a contemporary development located between the ever so popular areas of Brixton and Herne Hill. This secure, modern development has attention to detail, well maintained communal areas and a lift, while being engineered to meet all the requirements of modern living. As you enter the property on the third floor, you have the open plan reception and kitchen on your right-hand side. This room is a light and airy space with fantastic views and ample space to both dine and relax. The double bedroom is a comfortable size and the bathroom is contemporary. The property is situated in a fantastic location and unlike a lot of similar one-bedroom properties; the majority of the total square footage is useable living space, rather than being distributed within larger hallways. Effra Parade is a residential street that is pleasing on the eye and located within eight minutes' walk to both Brixton and Herne Hill.

Council tax band C      EPC rating D (58)

## Features

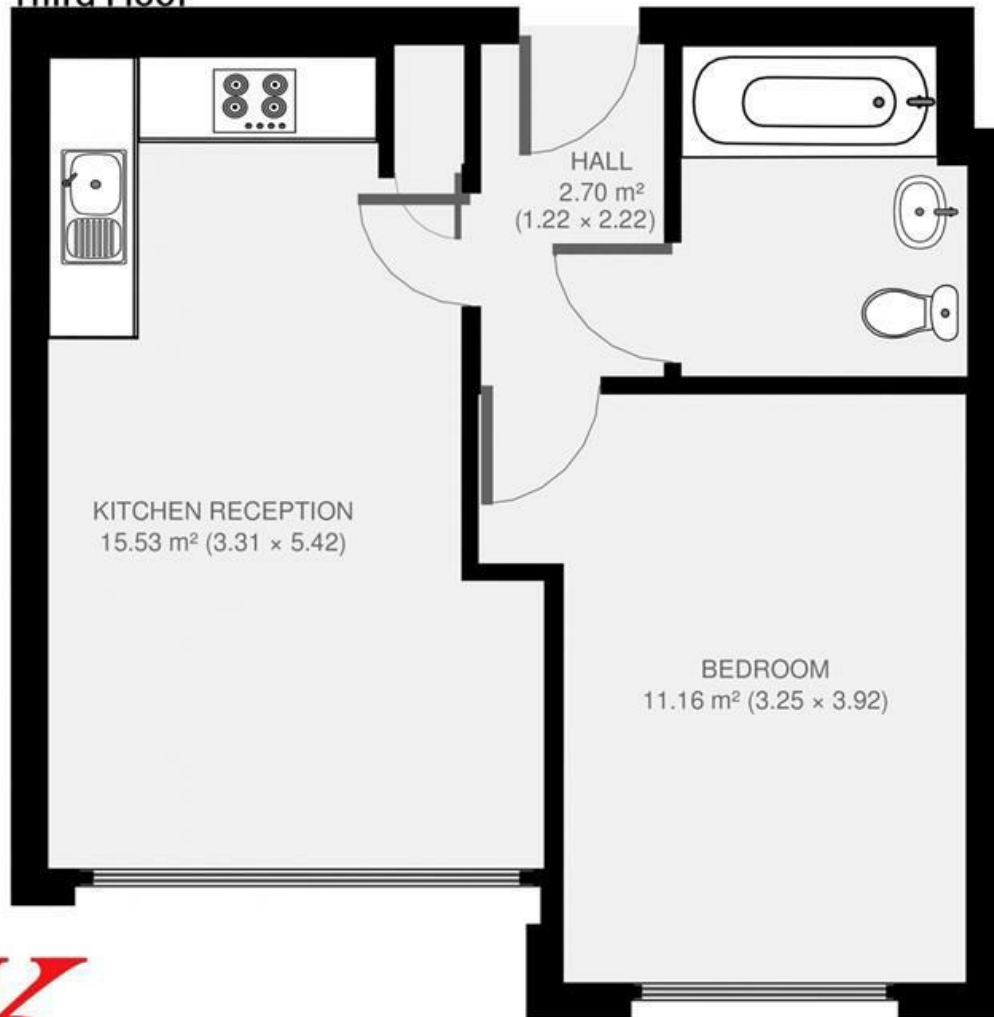
- Lift
- Modern development
- Bright and airy
- Close to the park
- 1 Bedroom
- 1 Bathroom
- 1 Reception





## Effra Parade

### Third Floor

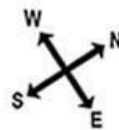


1 bed Flat.

Approx internal area:

**407 sqft 38 sqm**

While we do try our very best, floor plans are produced as a guide only and we take no responsibility for the precise accuracy with which any property is represented





Effra Parade, Brixton, SW2

