

Stockwell Park Walk, Brixton, SW9

2 bedroom flat for sale

£560,000

Leasehold

Property Details

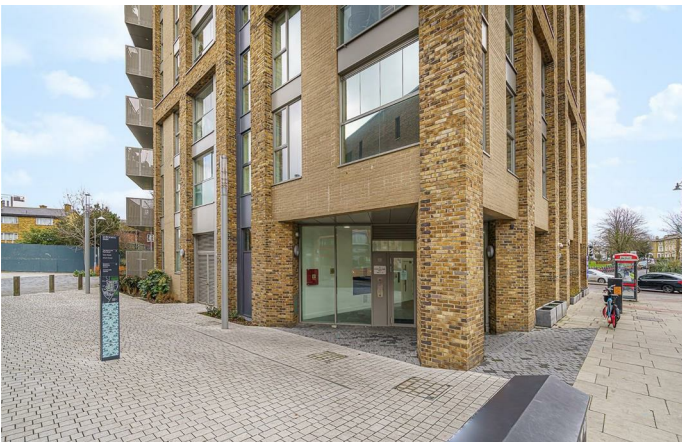
A luxurious two bedroom, two bathroom apartment with private West-facing terrace, located in the coveted Brixton-Stockwell-Clapham Triangle. Tucked away on the fifth floor, to the rear of the building away from the main road, ensuring a bright, private and quiet ambience. The open plan reception room is bathed in light from multiple windows, a sociable space equipped with built-in speakers, Sky TV ports and Phillips Hue lighting. The contemporary kitchen boasts generous storage, fully integrated Neff appliances and views over Brixton to The Shard and Battersea. The lounge leads out to a private terrace ideal for soaking up the afternoon sun and spectacular sunsets. Both bedrooms are generous doubles, set at either side of the property. The principal bedroom enjoys sunset views, built in wardrobes and an en-suite. The second bedroom offers city views and a wired LAN internet port. A family bathroom including bath and a handy hallway utility are also on offer. With underfloor heating and high energy efficiency reducing those pesky bills. Further benefits include secure shared bike storage, a communal garden and lift access.

Features

- Two double bedrooms
- Two bathrooms
- Secure modern development
- West-facing private terrace
- Shared gardens and bike storage
- Lift access
- Just shy of 700 square feet of internal space
- Sought-after location between Brixton, Stockwell and Clapham
- Short walk to the Victoria and Northern Lines

Council tax band D EPC rating B (84)

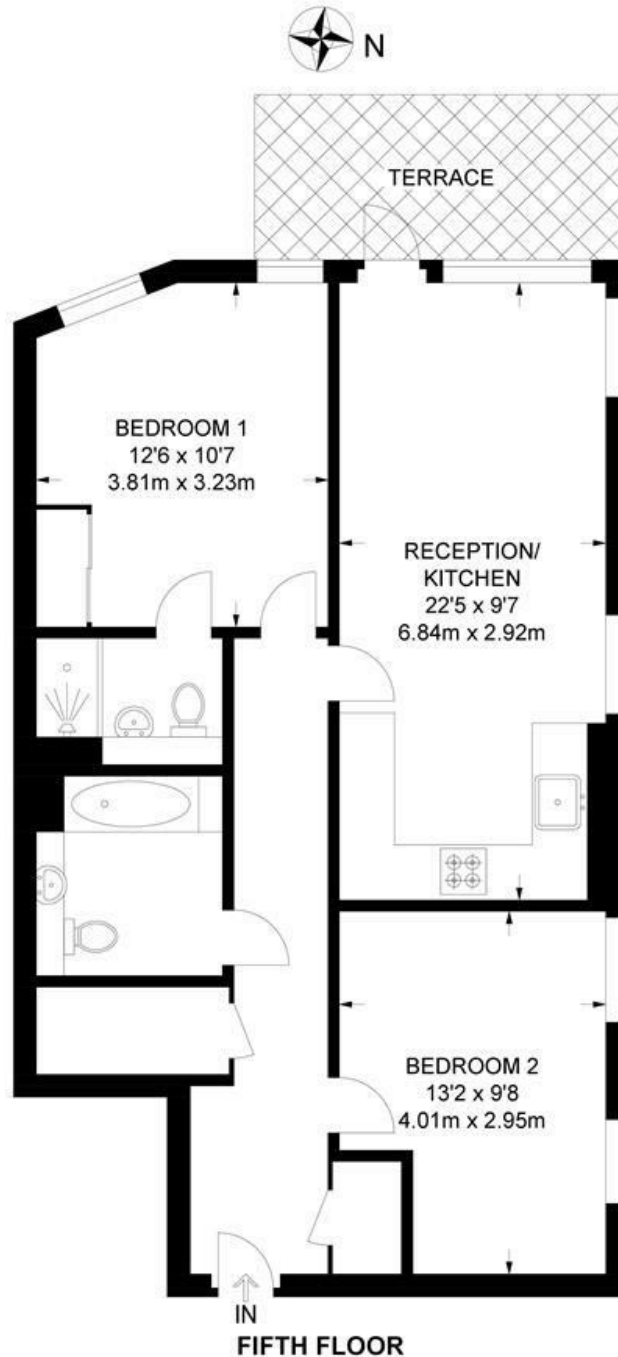




Stockwell Park Walk, Brixton, SW9

Stockwell Park Walk, SW9
2 Bedroom Flat

APPROXIMATE GROSS INTERNAL AREA: **698 SQ FT / 64.8 SQ M**



While we try our very best, floor plans are produced as a guide only and we take no responsibility for the precise accuracy with which any property is represented.

Stockwell Park Walk, Brixton, SW9

