

**Ratray Road, Brixton, SW2**

2 bedroom flat to let

£450 Per Week

Furnished

Property Details

This is a very well presented first floor two double bedroom flat, located in the vibrant area of Brixton. The property is light and spacious with a modern, clean finish. The flat comprises a good size open plan kitchen reception with large sash windows that flood the room with plenty of natural light. There are also two double bedrooms, one having direct access to your own private terrace, to top this lovely property off there is a good family sized bathroom. Please call in now to book in your viewings.

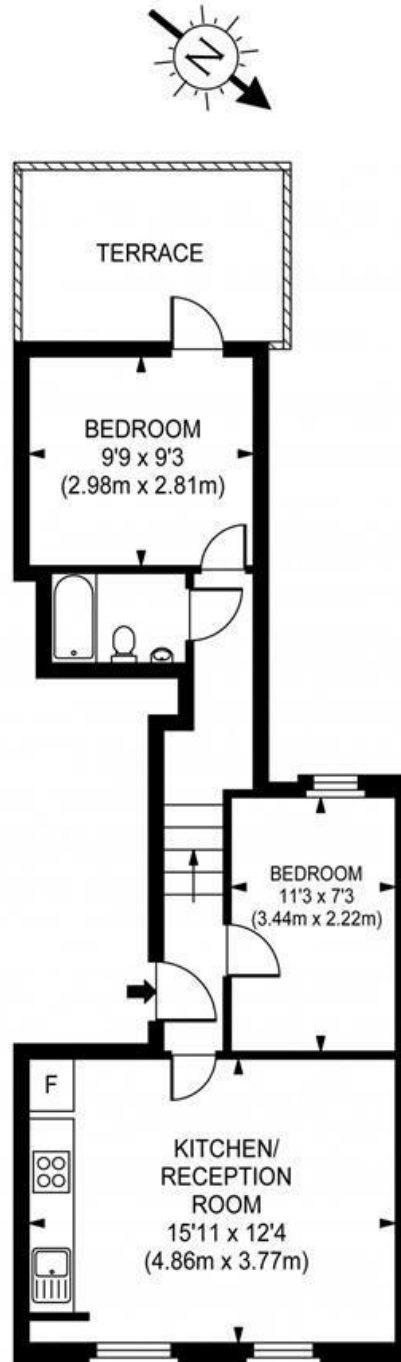
Features

- Open Plan
- Victorian Conversion
- Great Location
- Private Terrace
- Light and airy

Council tax band C EPC rating C (72)



Ratray Road, Brixton, SW2



Gross Internal Area 463 sq ft/ 43 sq meters

Whilst every attempt had been made to ensure the accuracy of the floorplan shown, all the measurements, positioning fixtures, fittings and any other data shown are an approximate interpretation for illustrative purposes only and are not for scale. No responsibility is taken for any error, omission, miss-statement or use of data shown.

Ratray Road, Brixton, SW2

