



**Holmewood Road, Brixton, SW2**

2 bedroom flat - conversion for sale

**£450,000**

Share of Freehold

## Property Details

An appealing two double bedroom flat within a Victorian terrace in this quiet residential pocket, on a no-through road adjacent to a beautiful garden square, with access to central Brixton, Streatham Hill, Balham and Clapham. The open-plan reception is neutrally styled, light and airy with large South-West facing windows plus generous dimensions. The kitchen is fully integrated, offering ample storage within sleek cabinetry, plus dine in comfort with space for a large dining table. Peacefully nestled to the rear both bedrooms are doubles with the same tastefully neutral décor. The principal features dual-aspect windows for a bright yet soothing ambience, whilst the second is currently a generous home office and guest room with desk, bed and triple wardrobes, easily repurposed back into a rentable double bedroom if preferred. Of further appeal for sharers, the bedrooms are set apart for an added level of privacy. The bathroom is equipped with a bathtub plus overhead shower, storage and heated towel rail.

Council tax band C    EPC rating (null)

## Features

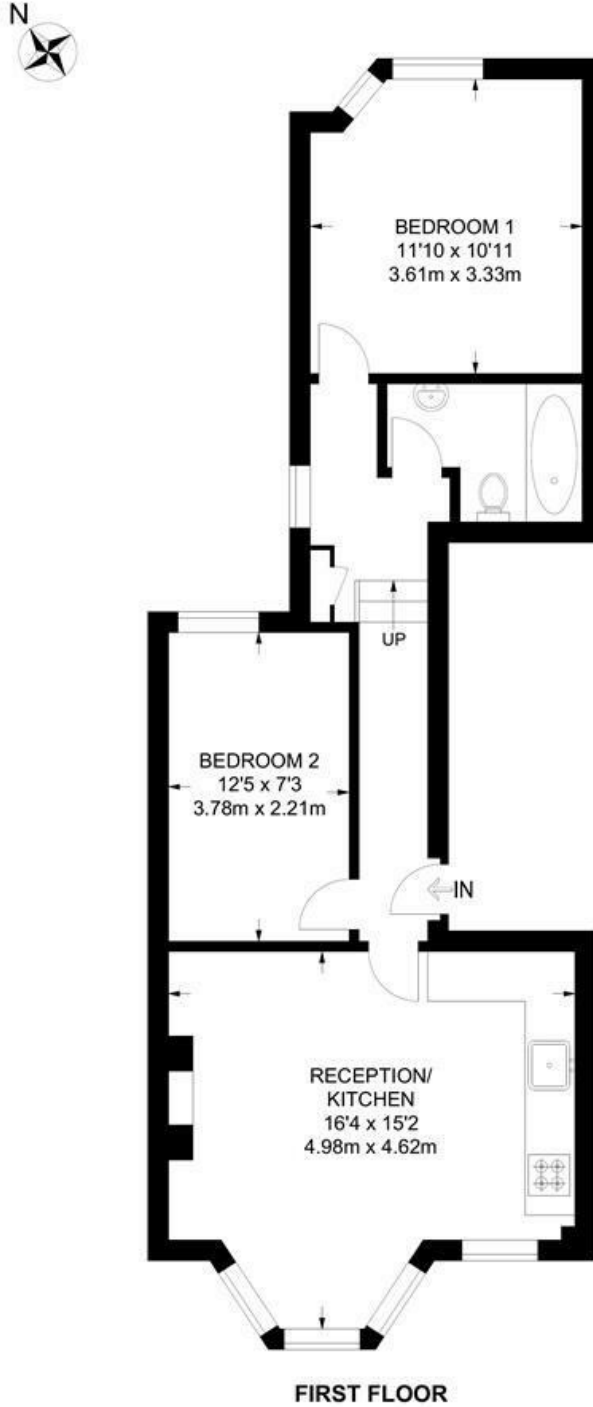
- Two double bedrooms
- Victorian conversion
- Adjacent to a pretty garden square
- Neutrally yet tastefully presented
- Bright and airy
- Local amenities of Brixton Hill on the doorstep
- Brixton a fifteen-minute walk or five-minute bus
- Streatham Hill a seven-minute walk
- Fantastic transport links
- Share of freehold



Holmewood Road, Brixton, SW2

**Holmewood Road, SW2**  
**2 Bedroom Flat**

APPROXIMATE GROSS INTERNAL AREA: 567 SQ FT / 52.7 SQ M



While we try our very best, floor plans are produced as a guide only and we take no responsibility for the precise accuracy with which any property is represented.

Holmewood Road, Brixton, SW2

