



Lambert Road, Brixton, SW2

1 bedroom flat to let

£415 Per Week

Unfurnished

Property Details

A lovely one bedroom garden flat in a highly sought after location. This ground floor flat comprises a large reception, a separate galley kitchen, a sleek modern bathroom and a double bedroom. The flat benefits from a much larger garden than the vast majority of similar properties in Brixton, extending thirteen metres back and with a secure side access passage for ease of access - useful for bikes/gardening equip etc.

Features

- One double bedroom
- Family bathroom
- Separate reception and kitchen
- Large private garden
- Cellar
- Secure side access
- Highly desirable road

Council tax band C EPC rating D (58)



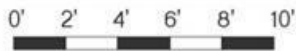
Lambert Road, Brixton, SW2



1 bed Flat.

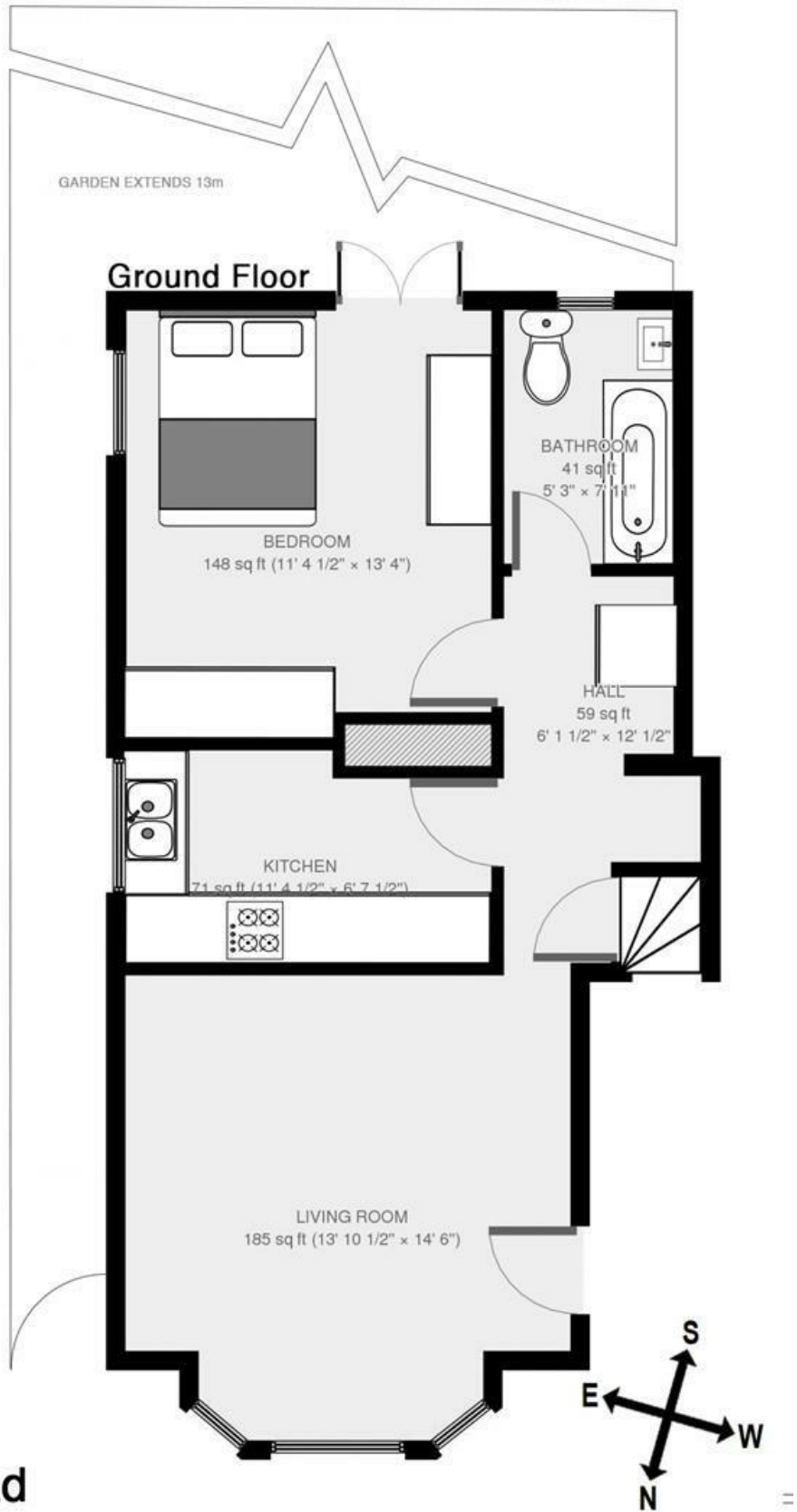
Approx internal area:

590 sqft 55 sqm



While we do try our very best, floor plans are produced as a guide only and we take no responsibility for the precise accuracy with which any property is represented

GARDEN EXTENDS 13m



Lambert Road, Brixton, SW2

