



Loughborough Road, SW9

6 bedroom house to let

£1,292

Furnished

Property Details

Keating Estates are delighted to present this elegant, characterful and bright six double bedroom townhouse to market. This property has been recently refurbished to a high standard throughout with enormous sensitivity to the period character of the property. Situated in Loughborough Road, Brixton the property is situated in a fantastic central location, a five minute walk from Loughborough Junction station, which provides direct trains to Blackfriars, Farringdon and Kings Cross/St Pancras. Brixton is within a fifth minute walk, perfect for anyone who wants to be close to the action – the delights of Brixton Village, POP Brixton and all the area has to offer in terms of food and nightlife are all within easy reach. Brockwell Park is a short distance and the amenities within leafy Herne Hill are a fifteen minute walk away. Camberwell is also within easy reach emphasizing how much choice is on offer here, its location cannot be overstated. On the lower ground you will find an open plan kitchen reception area which has ample room to dine and relax. The kitchen is contemporary designed with modern living in mind and is a fantastic entertaining space that seamlessly flows through into a private garden. On the ground floor comprises two double bedrooms and a bathroom, The first and second floor houses the principle bedroom plus three further double bedrooms which are all a fantastic size, all boasting wood floorboards and two contemporary bathroom with neutral styling completes this fantastic house.

Features

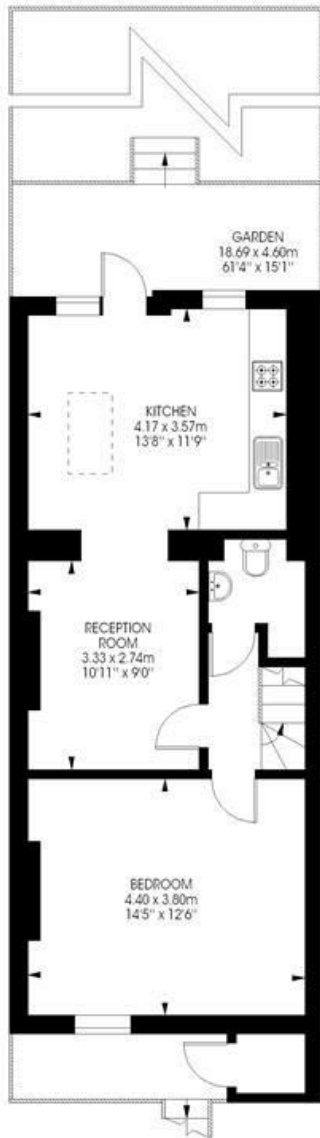
Council tax band E EPC rating D (63)



Loughborough Road, SW9

Loughborough Road,
Brixton, SW9
6 bedroom house

Approximate internal area: 1722 sqft / 160 sqm



Lower Ground Floor



Raised Ground Floor



Second Floor



First Floor



While we try our very best, floor plans are produced as a guide only and we take no responsibility for the precise accuracy with which any property is represented.



Loughborough Road, SW9

