



Clapham Park Road, Clapham, SW4

2 bedroom flat - purpose built for sale

£500,000

Leasehold

Property Details

An appealing two double-bedroom, two-bathroom flat with off-street parking occupies the fourth floor of a grand purpose-built apartment block on Clapham Park Road, perfectly located for Clapham Common, Clapham High Street and Abbeville Village. The flat offers generous proportions and exceptional natural light and privacy due to its elevated position. An impressive reception room is large enough to lounge, dine and entertain, with almost floor-to-ceiling windows enjoying leafy views over the Clapham rooftops. The kitchen is adjacent, sleek and modern with plentiful storage and ample worktop space. Both bedrooms are tucked away from the sociable spaces, they are both generous doubles, neutrally decorated with built-in wardrobe space. The principal bedroom is particularly sizeable and further benefits from large windows and a contemporary en-suite. Set opposite the second bedroom, the main bathroom completes this appealing home, equipped with both shower and bath, ideal for a soak in the tub after a stroll around nearby Clapham Common. The storage options are abundant with multiple additional cupboards in the hallway. Allocated off-street parking is securely set behind gates to the side of the building.

Council tax band E

EPC rating C (74)

Features

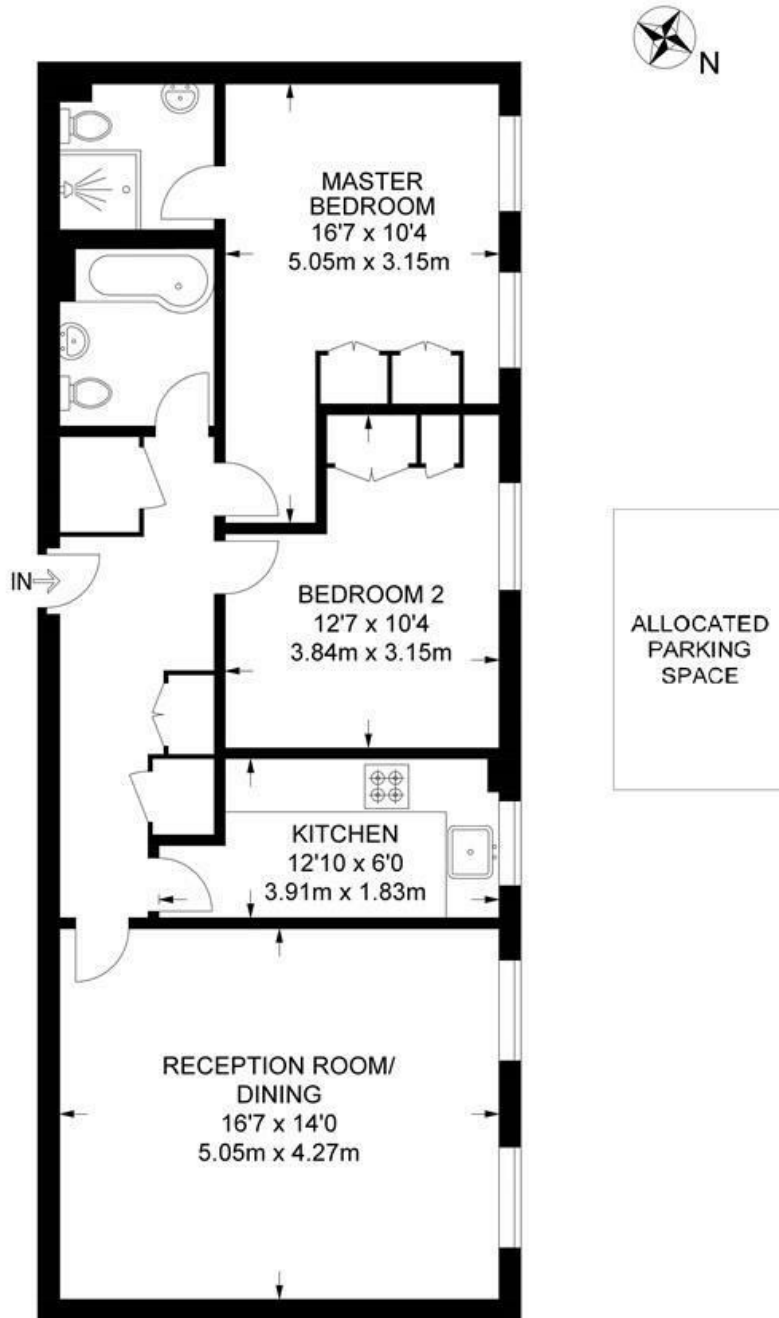
- Two double bedrooms
- Two bathrooms
- Purpose-built apartment
- Allocated parking off-street
- Over 760 square feet of internal living space
- Bright and private setting
- Local amenities on the door-step
- Clapham High Street and Abbeville Village both under a ten-minute stroll away
- Access to both the Northern and Victoria Lines
- Chain-free



Clapham Park Road, Clapham, SW4

Clapham Park Road, SW4
2 Bedroom Flat

APPROXIMATE TOTAL INTERNAL AREA: 762 SQ FT / 70.8 SQ M



FOURTH FLOOR



While we try our very best, floor plans are produced as a guide only and we take no responsibility for the precise accuracy with which any property is represented.

Clapham Park Road, Clapham, SW4

