

**Helix Road, Brixton, SW2**

2 bedroom flat to let

£460 Per Week

Furnished

Property Details

Keating Estates are proud to present this large two bedroom garden flat. Both bedrooms are spacious doubles with the larger bedroom looking out a bay window. The second bedroom has direct access through French doors to the private garden, perfect for the warmer months. The flat also comprises a separate kitchen which also has garden access, an open plan reception dining area, and a large bathroom. The centre of Brixton, South London's new culinary mecca, is within a short walk, with all it has to offer in terms of restaurants, nightlife and transport links. With Brixton Village, Brockwell Park, and Herne Hill's pubs and restaurants all on your doorstep, there is something to cater for all.

Council tax band C EPC rating D (56)

Features

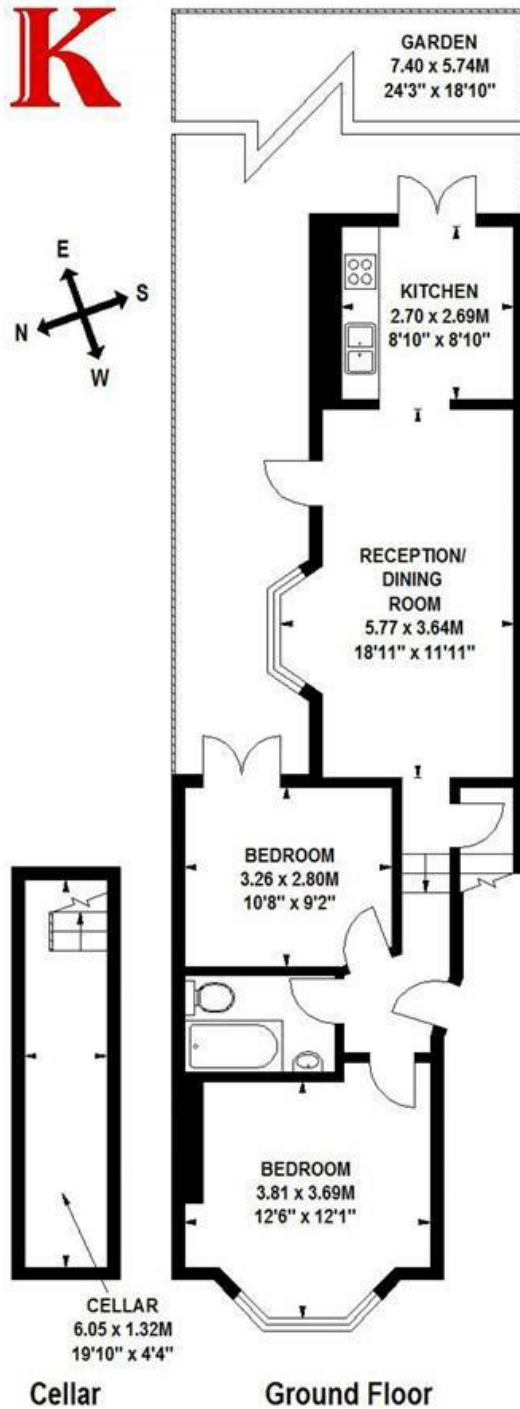
- Two double bedrooms
- Family bathroom
- Separate reception and kitchen
- Victorian
- Private garden
- Close to Brockwell Park
- Close to Central Brixton



Helix Road, Brixton, SW2

Helix Road, SW2

Approximate gross internal area
67 sq m / 721 sq ft



Floor Plan produced for Keating Estates by Mays Floorplans © . Tel 020 3397 4594
Illustration for identification purposes only, not to scale
All measurements are maximum, and include wardrobes and window bays where applicable

Helix Road, Brixton, SW2

