



Milton Road, Herne Hill, SE24

2 bedroom flat - conversion for sale

£500,000

Leasehold

Property Details

This charming flat boasts endearing character and well-proportioned rooms throughout. The principal bedroom at the front boasts a beautiful bay window complete with wooden shutters and offers built-in storage. A second bedroom sits adjacent, a comfortable double that could be rented out if desired but would also be perfect as a nursery, home office or anything else the purchaser may require. An appealingly bright reception follows on, offering a fantastic sociable space perfect for entertaining, dining, relaxing and unwinding, feeding through to a well-equipped and fully integrated kitchen that maximises the square footage on offer and provides a more casual dining option. The kitchen offers generous storage options and surface space as well as views over the surrounding rear gardens.

Features

- Two double bedrooms
- Victorian conversion
- First floor
- Bright and airy
- Tastefully finished throughout
- Long lease
- Highly sought after location in Poet's Corner
- Brockwell Park in touching distance
- Herne Hill and Brixton Stations

Council tax band EPC rating C (72)

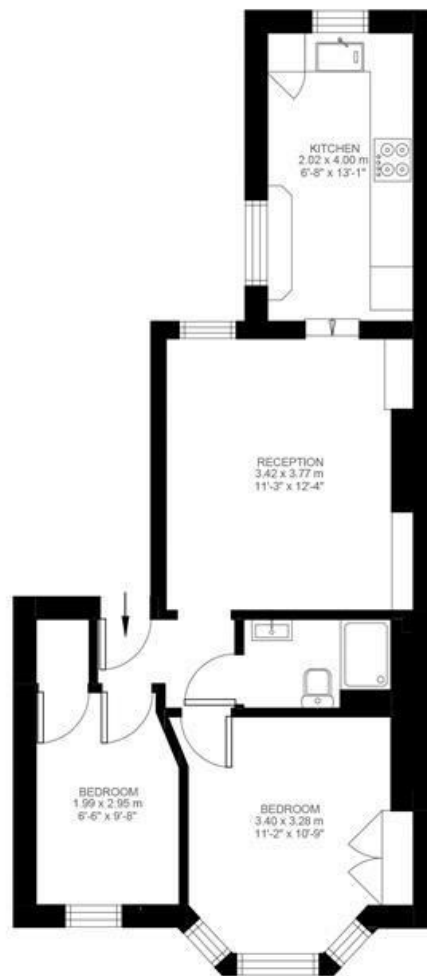


Milton Road, Herne Hill, SE24

Milton Road, Herne Hill, SE24

2 Bedroom Flat

Approximate internal area: 471 sqft 44 sqm



First Floor



While we do try our very best, floor plans are produced as a guide only and we take no responsibility for the precise accuracy with which any property is represented.

Milton Road, Herne Hill, SE24

