

**Acre Lane, Brixton, SW2**

1 bedroom flat - purpose built for sale

**£525,000**

Leasehold

## Property Details

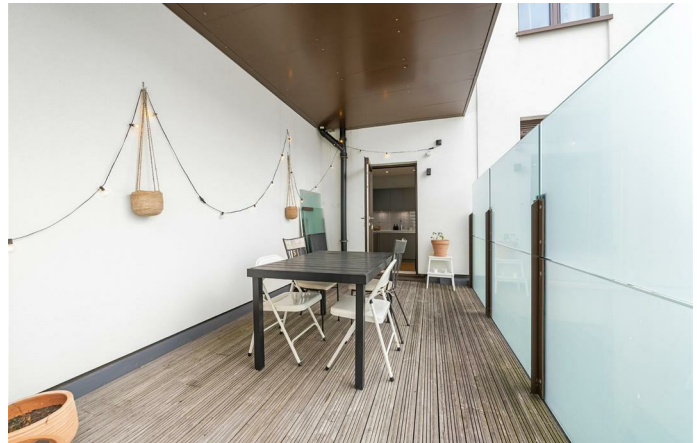
An impressive one bedroom apartment with a private terrace, in this stunning Art-Deco style modern building with high-quality fixtures and fittings. This secure flat boasts an appealing open-plan reception creating a great entertaining space, with high ceilings and parquet flooring, plus a sleek integrated kitchen with plenty of storage. The living area is vast with ample room for a large dining table. Partially covered, the sizeable terrace can be savoured all year, unwind in the uncovered suntrap to the far end in the summer, and enjoy being protected from the elements in the winter. The double bedroom is large yet soothing with built-in wardrobes. There is further storage in the entrance hall. The bathroom is luxurious with feature lighting, bath and shower overhead. This particular home benefits a favourable position quietly facing away from Acre Lane in an elevated position with inaudible neighbours, fantastic insulation and double glazed windows for high energy efficiency. This sought-after development has just twenty-six privately owned apartments, beautiful communal areas, a lift and bike storage.

Council tax band C

EPC rating B (81)

## Features

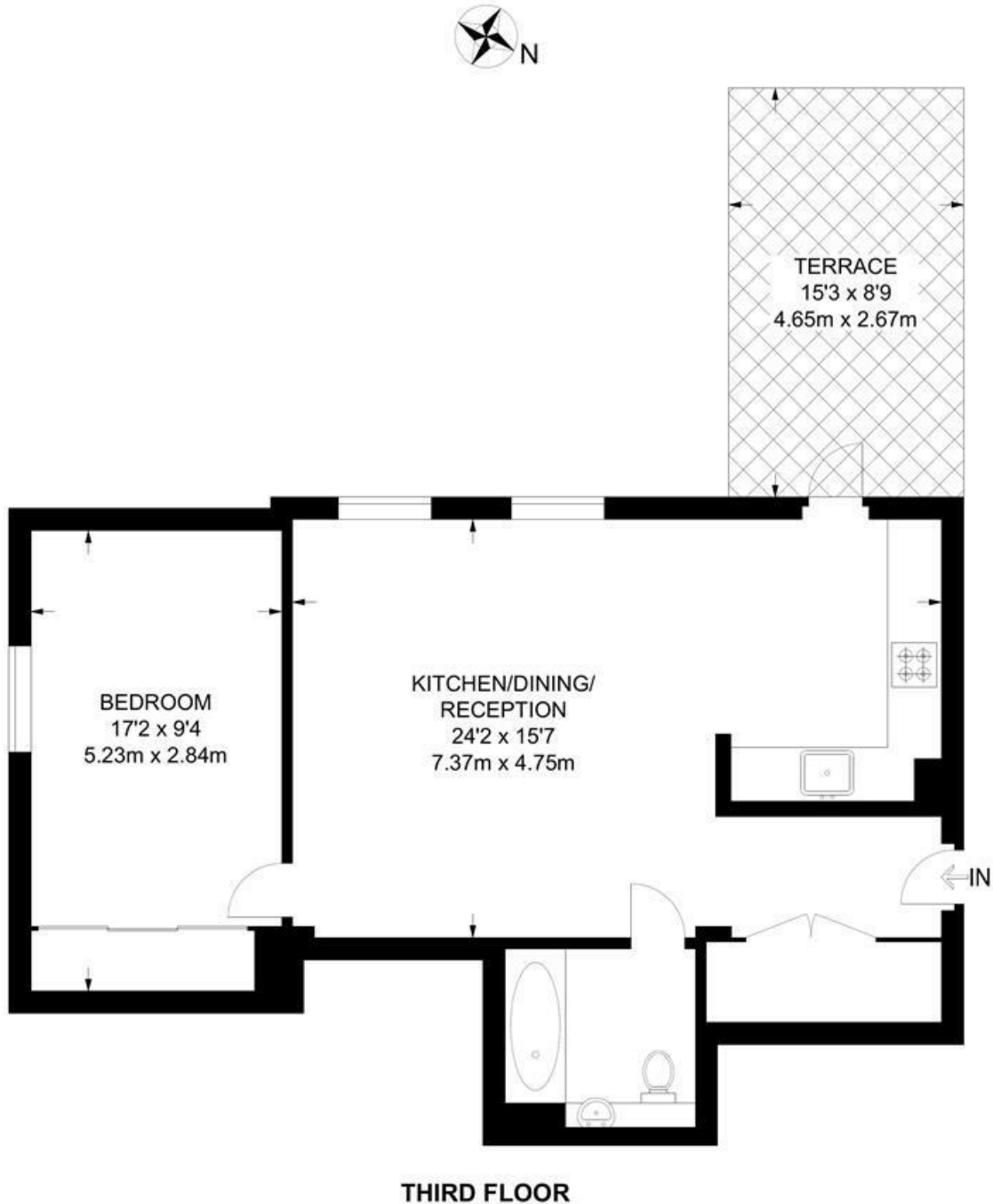
- One double bedroom
- South Facing private terrace
- Secure modern build in Art-Deco style
- Almost 625 square feet
- Quiet position within the building
- High-end finishes
- Build warranty
- Lift and bike storage
- Central location in Brixton
- Victoria and Northern Lines



Acre Lane, Brixton, SW2

**Ivor House, SW2**  
**1 Bedroom Flat**

APPROXIMATE GROSS INTERNAL AREA: **622 SQ FT / 57.8 SQ M**



While we try our very best, floor plans are produced as a guide only and we take no responsibility for the precise accuracy with which any property is represented.

Acre Lane, Brixton, SW2

