



**Morrish Road, Brixton, SW2**

2 bedroom flat - conversion for sale

**£500,000**

Share of Freehold

## Property Details

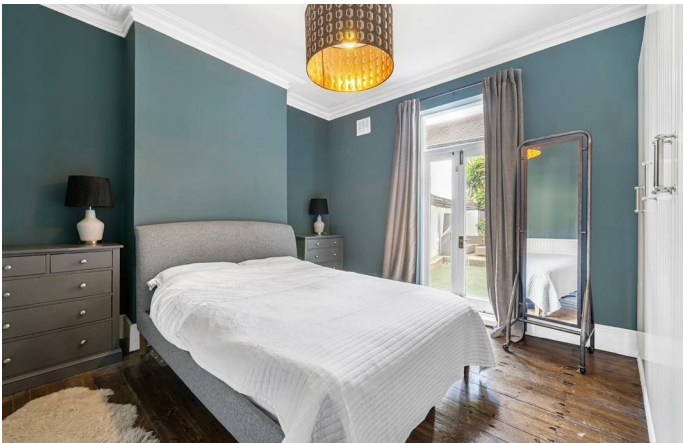
A stunning two double bedroom flat with a private South-facing garden on the well-located Morrish Road, popular for its proximity to Brixton, Streatham Hill and Balham. A tasteful and stylish mix of contemporary design and characterful features, this period flat offers an attractively bright and airy atmosphere. Overlooking the garden the open-plan reception is a contemporary and relaxing space in which to lounge, dine or cook. Fully integrated, the kitchen offers a sociable layout which wraps around into a breakfast bar. The private garden is a suntrap, comprising a turfed lawn and decked seating area complete with palm tree and the added advantage of access via both the reception and second bedroom. To the front, nestled behind large bay windows sits a characterful principle bedroom with proportions to accommodate the traditional bedroom furnishings plus additional storage. The second double bedroom sits adjacent, also characterful with built-in wardrobes and large-pane patio doors to the garden. A neutral bathroom completes this charming property, equipped with a walk-in rain shower plus storage and a large mirror. Early registration of interest advised.

Council tax band C      EPC rating D (67)

## Features

- Two double bedrooms
- South facing private garden
- Victorian conversion
- Well-presented throughout
- Neighbourly road with street party and book club
- Proximity to Brixton, Streatham Hill and Balham
- Swift transport links to Victoria and London Bridge
- Brixton a fifteen-minute walk or five-minute bus
- Streatham Hill an eight-minute walk
- Chain-free





Morrish Road, Brixton, SW2

**Morrish Road, SW2**  
**2 Bedroom Flat**

APPROXIMATE GROSS INTERNAL AREA: **681 SQ FT / 63.3 SQ M**



**GROUND FLOOR**



While we try our very best, floor plans are produced as a guide only and we take no responsibility for the precise accuracy with which any property is represented.



Morrish Road, Brixton, SW2

