



**Fortrose Gardens, Streatham Hill, SW2**

2 bedroom flat to let

**£360 Per Week**

Part furnished

## Property Details

A spacious split level two double bedroom flat located moments away from Tooting Bec Common. The flat offers two large double bedrooms both fitted with large windows allowing plenty of natural light to flood in and fill the room. The reception room has a feature fireplace and access to the private balcony. There is a separate kitchen with plenty of storage space and a family size bathroom shared by both bedrooms. The property is a 12-minute walk to Streatham Hill, 10-minute bus trip to Clapham South or 10-minute bus trip to Brixton. Clapham and Brixton have a wide range of different bars, pubs, and restaurants so you'll never go short of choice.

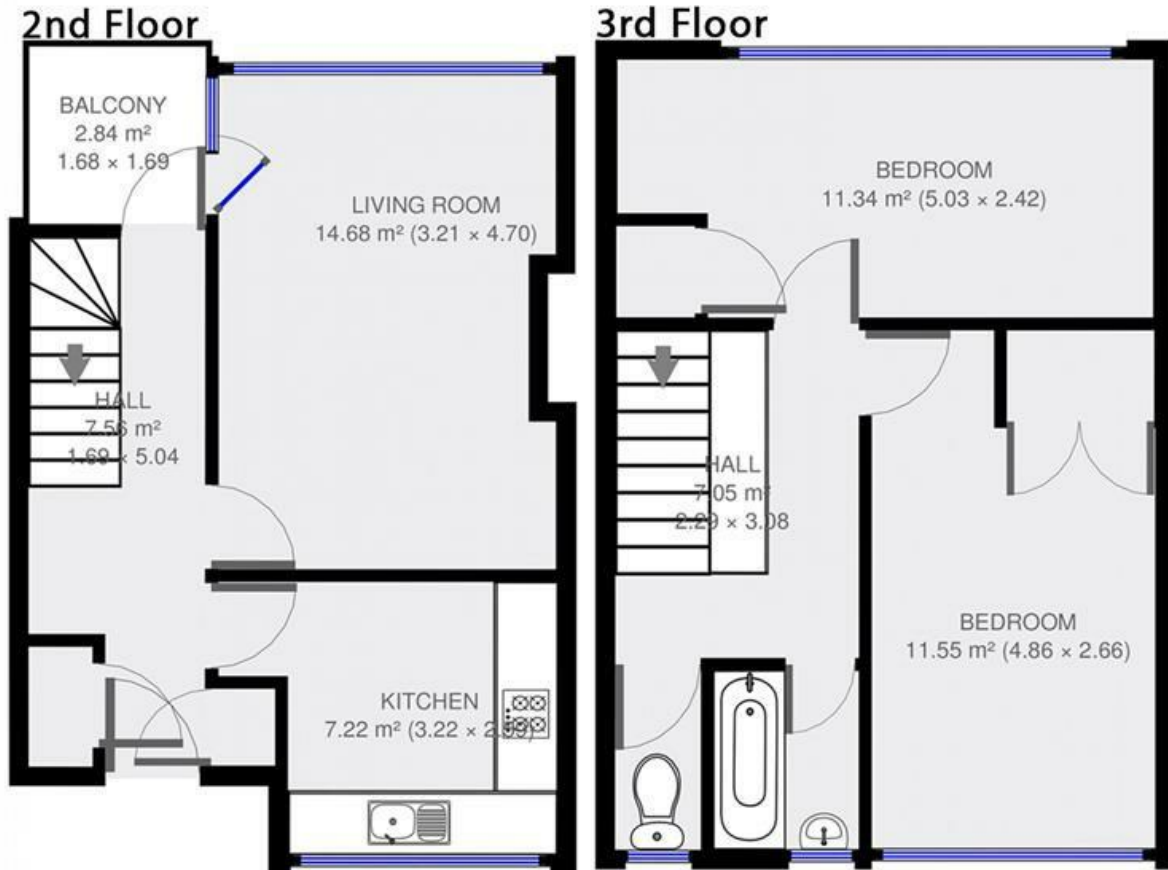
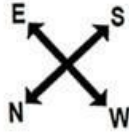
## Features

- Balcony
- Light and airy
- 2 Bedrooms
- 1 Reception
- 1 Bathroom
- Split Level

Council tax band B      EPC rating D (63)



## Fortrose Gardens



# K

2 bed Flat.

Approx internal area:

711 sqft 66 sqm

While we do try our very best, floor plans are produced as a guide only and we take no responsibility for the precise accuracy with which any property is represented

Fortrose Gardens, Streatham Hill, SW2

