

**Loughborough Road, Brixton, SW9**

2 bedroom flat - conversion for sale

**£635,000**

Leasehold

## Property Details

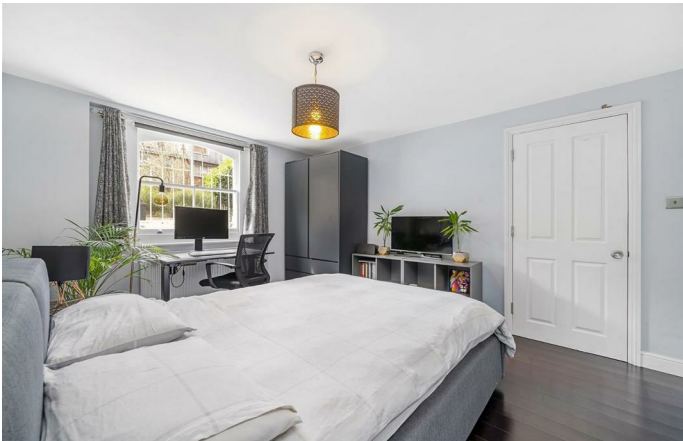
An exceptional two double bedroom maisonette with a garden for sale on Loughborough Road. Set within an impressive Victorian semi-detached house, this spacious flat is split over two floors with a private entrance into a spacious hall. The semi open plan reception room is grand with a bright atmosphere with high ceilings. The lounge is set behind sash windows framed with original shutters, wooden floors and a wood burning stove. The kitchen is integrated in traditional cabinetry in a modern colour palate, offering vast storage and room for a generous dining table with leafy views of the garden. A separate utility room keeps the laundry quietly tucked away. Tended to by the current owners, this maisonette has sole access to the South-facing shared garden, both directly and around the side of the house, ideal for bikes or buggies, plus two handy storage houses. Downstairs, both bedrooms are sizeable doubles, a rarity for period properties. The contemporary bathroom has a feature floor, luxuriously furnished with a bath with a rain shower overhead, ideal for a relaxing soak in the tub after pottering in the garden. Completing the interior is further storage under the stairs. Early registration of interest is advised.

Council tax band D    EPC rating D (65)

## Features

- Two double bedrooms
- Sole access to a South-facing garden
- Victorian semi-detached maisonette
- Own private entrance
- 990 square feet of internal space
- Local amenities and shops on the doorstep
- Central Brixton an eight-minute walk
- Northern and Victoria lines in under ten-minutes
- Loughborough Junction station a nine-minute walk

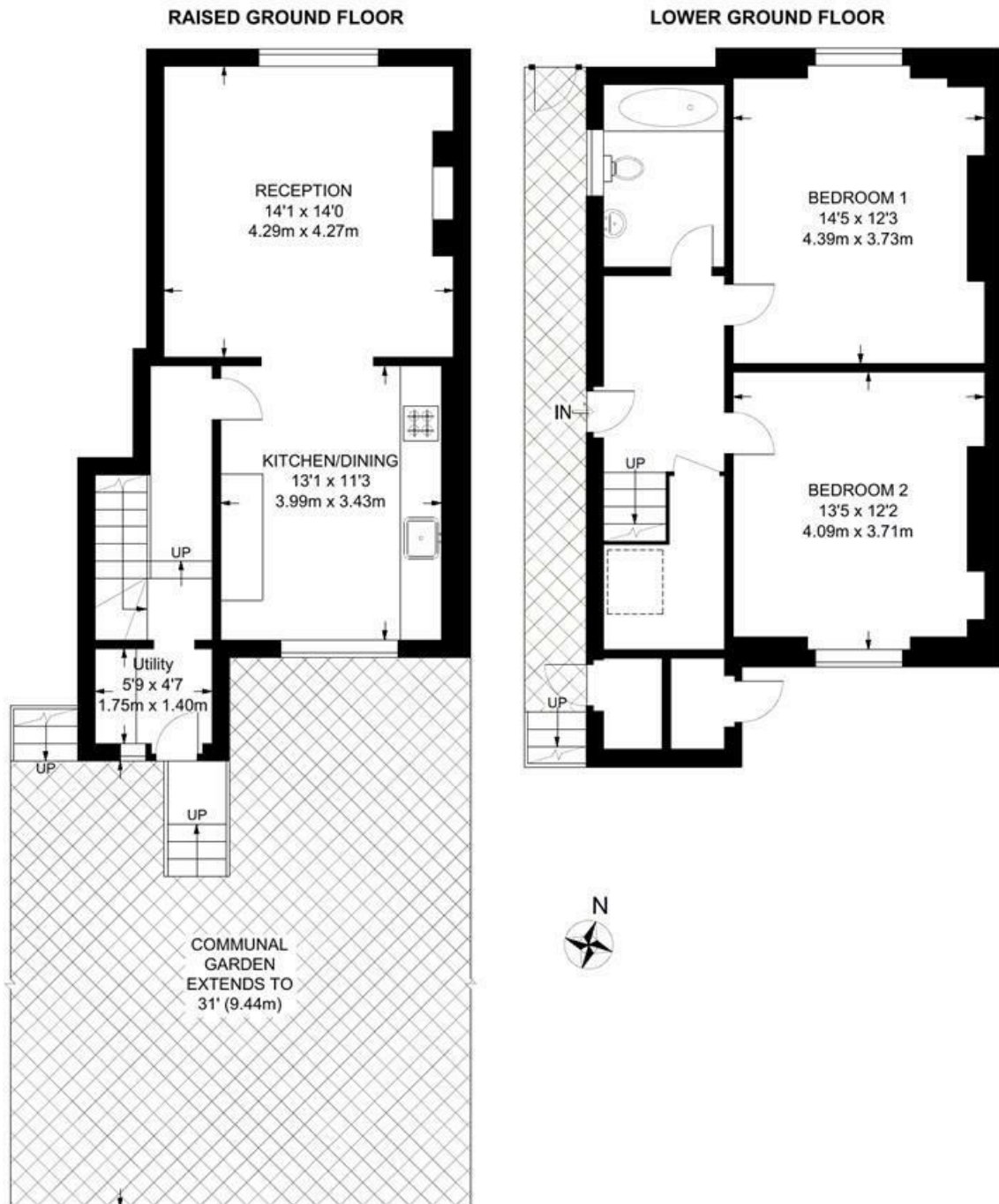




Loughborough Road, Brixton, SW9

**Loughborough Road, SW9**  
**2 Bedroom Flat**

APPROXIMATE GROSS INTERNAL AREA: 990 SQ FT / 92 SQ M



While we try our very best, floor plans are produced as a guide only and we take no responsibility for the precise accuracy with which any property is represented.

Loughborough Road, Brixton, SW9

