



Kildoran Road, Brixton, SW2

1 bedroom flat for sale

£515,000

Share of Freehold

Property Details

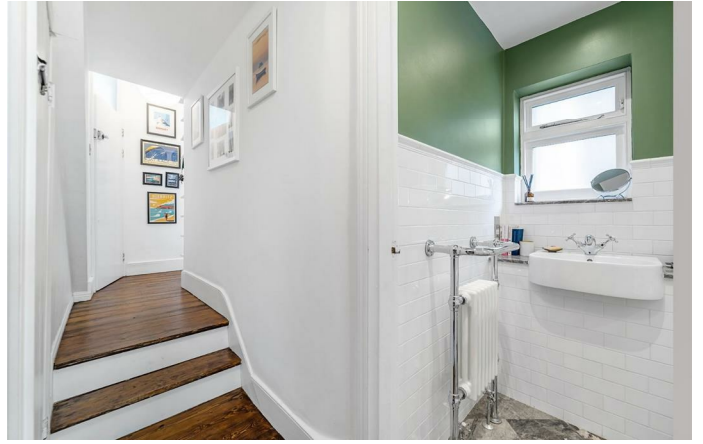
This stunning home has multiple selling points, the reception has characterful features creating an inviting ambience with a working fire. Just a year old, the kitchen is beautifully finished in contemporary styling with light features and thoughtfully considered storage solutions plus room for a dining table with leafy garden views. The reception and kitchen are open-plan with the option to be separated by folding doors for a cosier feel. French doors lead to the garden, quiet and particularly private, not being overlooked at the rear. Easily maintained and larger than average this pretty spot gets the sun all day in the summer. Quietly nestled to the rear with dual aspect windows overlooking the garden, the bedroom is currently dressed with a King sized bed, with fitted wardrobes. The bathroom is traditionally styled yet contemporary. Completing this wonderful home, the cellar offers additional storage. Precedent has been set on the road should the new wish to seek the necessary permissions to extend into the side return and convert into a two bedroom. Early registration of interest is advised.

Features

- One double bedroom
- Large private garden
- Victorian conversion
- Beautifully presented throughout
- Working fireplace
- Potential to extend STNP
- Quiet residential street between Brixton and Clapham High Streets
- Walking distance to the Victoria and Northern lines
- Share of freehold
- Chain-free

Council tax band C EPC rating D (59)





Kildoran Road, Brixton, SW2

Kildoran Road, SW2
1 Bedroom Flat

APPROXIMATE GROSS INTERNAL AREA WITH CELLAR: **607 SQ FT / 56.4 SQ M**



While we try our very best, floor plans are produced as a guide only and we take no responsibility for the precise accuracy with which any property is represented.

Kildoran Road, Brixton, SW2

