



**Railton Road, Herne Hill, SE24**

2 bedroom flat - conversion for sale

**£500,000**

Share of Freehold

## Property Details

This attractive property has a bright ambience throughout with a fresh and contemporary finish. The open-plan reception is bathed in light from two South-West facing sash windows. Offering the proportions to lounge, dine and cook this sociable room is an inviting heart of the home, ideal for entertaining. The modern integrated kitchen offers stylish blue cabinetry and an ergonomic layout. Both bedrooms are nestled peacefully to the rear with leafy views, the principal boasting a Juliette balcony. The second bedroom offers a versatile space to be utilised to suit the needs of the purchaser. The contemporary bathroom is equipped with bath and overhead shower, finished with blue wall tiles, a hexagonal penny floor, plus a heated towel rail and integrated storage. This distinctive apartment would make a fantastic first home, well-presented and versatile, ready to move into straight away with an enviable location.

Council tax band B    EPC rating C (75)

## Features

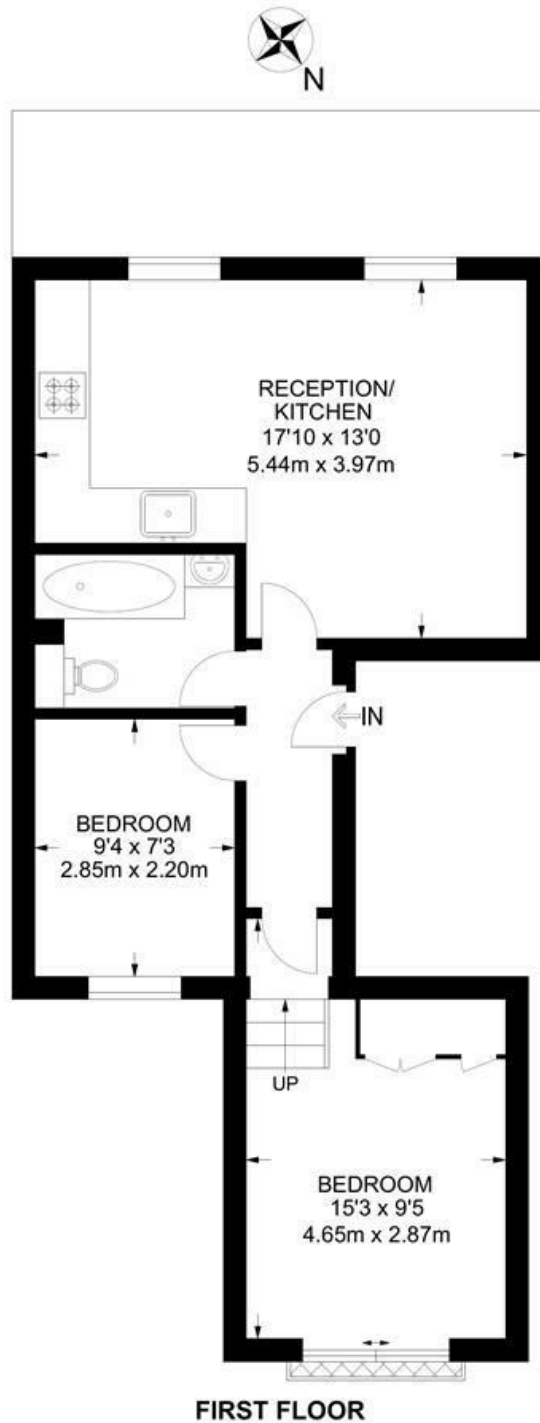
- Two bedrooms
- Juliette balcony
- Victorian conversion
- Bright and airy throughout
- Brixton a four-minute walk
- Herne Hill a seven-minute stroll
- Brockwell Park in under five minutes by foot
- Victoria Line and two overground stations
- Chain-free & share of freehold



Railton Road, Herne Hill, SE24

**Railton Road, SE24**  
**2 Bedroom Flat**

APPROXIMATE GROSS INTERNAL AREA: **483 SQ FT / 44.9 SQ M**



While we try our very best, floor plans are produced as a guide only and we take no responsibility for the precise accuracy with which any property is represented.



Railton Road, Herne Hill, SE24

