



Medora Road, Brixton, SW2

1 bedroom flat to let

£410 Per Week

Furnished

Property Details

Keating Estates are proud to present to market a delightful one double bedroom flat with a private garden on a sleepy road in one of Brixton's most popular residential pockets. Medora Road is a quiet and peaceful street, perfectly positioned within close proximity to the rolling greenery of Brockwell Park and the amenities of central Brixton, with a local pub around the corner.

The heart of the home is a smart open-plan reception room, this appealing room is stylishly finished with wooden floors, integrated shelving and a large bay sash window, ideal for hosting or unwinding in front of the ornate original fireplace. The kitchen is fully equipped and integrated offering an abundance of storage options and surface space. Nestled cosily to the rear of the home, tucked away from the already peaceful street, the bedroom is a comfortable double, benefitting from direct access to a private is low-maintenance garden, ready to be enjoyed the moment the weather permits. Adjacent, the bathroom is tastefully finished which completes this wonderful and charming flat.

Medora Road is situated a fifteen-minute stroll to the culinary and nightlife mecca of Brixton, and five minutes to the green open spaces of Brockwell Park with its iconic 1930's Lido and unrivalled sports facilities. A fifteen-minute walk across the park brings you to Herne Hill station and the many pubs, cafes and restaurants of Herne Hill. Living here you'll have the popular establishments on Brixton

Features

- Private garden
- Conservation area
- One bedroom
- Victorian
- Bright and airy
- Furnished
- Close to transport links
- Close to Brockwell Park

Council tax band C EPC rating D (57)



Medora Road, Brixton, SW2

Medora Road

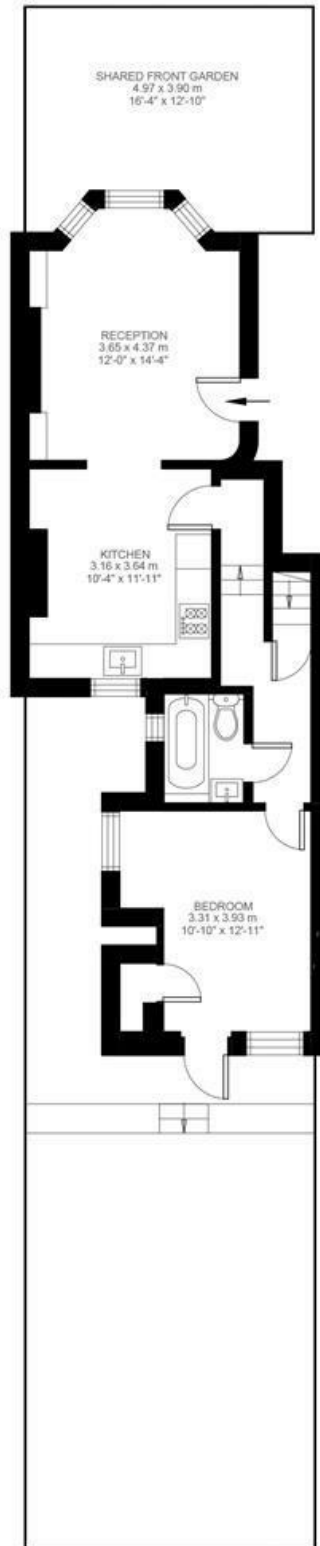
K

1 Bedroom Flat

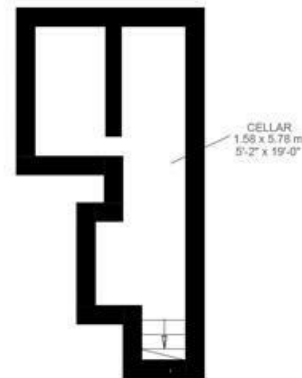
Approx internal area:

650 sqft 60 sqm

While we do try our very best, floor plans are produced as a guide only and we take no responsibility for the precise accuracy with which any property is represented



Ground Floor



Basement



Medora Road, Brixton, SW2

