

**St. Julians Farm Road, SE27**

1 bedroom flat to let

£380 Per Week

Unfurnished

Property Details

A modern bright and airy one double bedroom, ground floor flat, situated within minutes of West Norwood Station. A lovely and spacious reception is the heart of the home, comfortable dimensions to relax and unwind, dine and entertain, the kitchen is modern offering an abundance of storage options and surface space. The bedroom is spacious and well-proportioned and the property is completed by a family-sized modern bathroom along with access to a shared low-maintenance garden, ready to be enjoyed the moment the weather permits. The property is conveniently located in the centre of thriving West Norwood, just a few minutes' walk from the train station providing access to Victoria, The City and London Bridge, all within thirty minutes door to door. The amenities of the High Street are all close-by and having the open green spaces of Streatham Common is also a short walk away.

Council tax band B EPC rating E (51)

Features

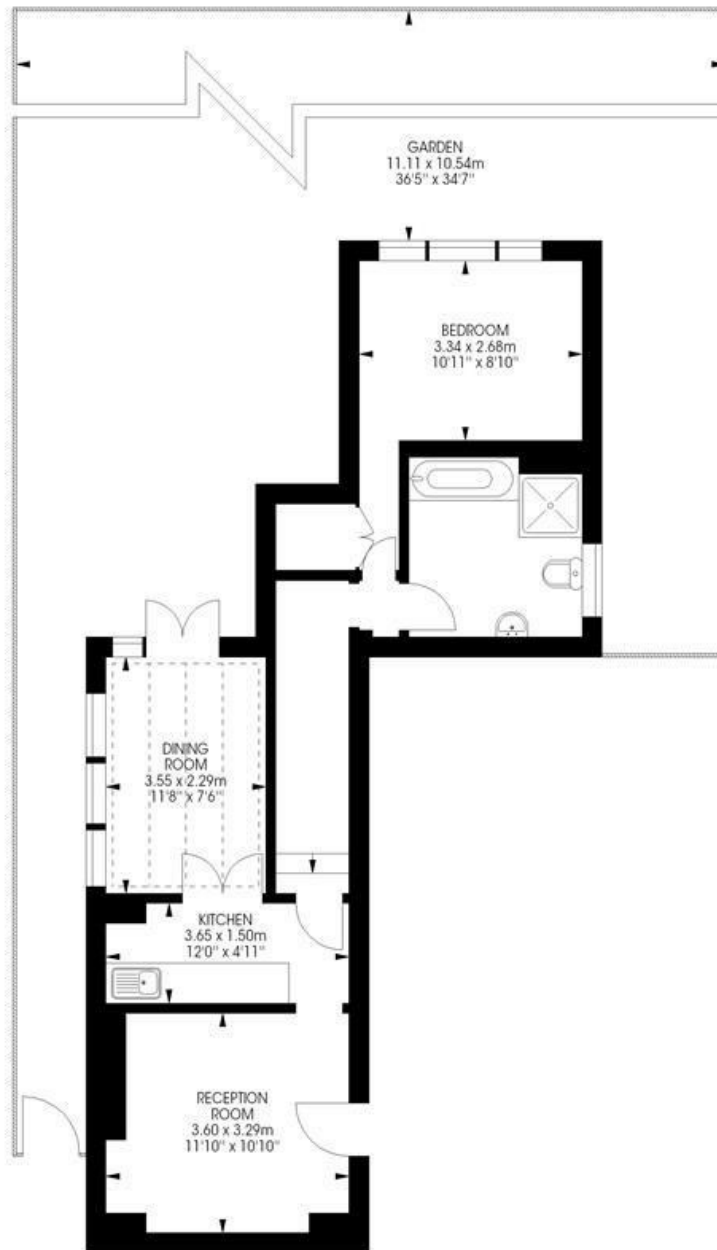
- One double bedroom
- Newly decorated
- Modern
- Close to West Norwood train station
- Close to Streatham Common
- Spacious
- Shared Garden



St. Julians Farm Road, SE27

St Julian's Farm Road,
West Norwood, SE27
1 bedroom flat

Approximate internal area: 574 sqft / 53.32 sqm



Ground Floor



While we try our very best, floor plans are produced as a guide only and we take no responsibility for the precise accuracy with which any property is represented.

St. Julians Farm Road, SE27

